

Anti-AFP antibody [6E6] (STJ97817)

STJ97817

GENERAL INFORMATION

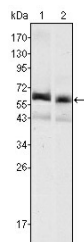
Product Type	Primary antibodies
Short Description	Mouse monoclonal antibody anti-Alpha-Fetoprotein is suitable for use in Western Blot and ELISA research applications.
Applications	WB, ELISA
Host/Source	Mouse
Reactivity	Human

PRODUCT PROPERTIES

Clonality	Monoclonal
Clone ID	6E6
Concentration	1 mg/mL
Conjugation	Unconjugated
Purification	The antibody was isolated from ascitic fluid by immunoaffinity chromatography using antigens coupled to agarose beads.
Dilution Range	WB 1:500-1:2000 ELISA 1:10000
Formulation	PBS, 50% Glycerol and 0.03% Sodium Azide.
Isotype	IgG2b
Storage Instruction	Store at -20°C for up to 1 year from the date of receipt, and avoid repeat freeze-thaw cycles.

TARGET INFORMATION

Gene ID	174
Gene Symbol	AFP
Uniprot ID	FETA_HUMAN
Immunogen	Purified recombinant fragment of human AFP expressed in E.coli.
Immunogen Region	
Specificity	AFP monoclonal antibody (Alpha-Fetoprotein) binds to endogenous Alpha-Fetoprotein.
Immunogen Sequence	



Western blot analysis using AFP monoclonal antibody against HepG2 (1) and SMMC-7721 (2) cell lysate.

This product is suitable for in-vitro studies under the RESEARCH USE ONLY [RUO] licence. This product must not be used as for diagnostic or other medical purposes.
St John's Laboratory Ltd, Knowledge Dock Business Centre, University Way, London, E16 2RD | Tel: 0208 223 3081