

Anti-CD247 antibody [4D10A6] {FITC} (STJ97919)

STJ97919

GENERAL INFORMATION

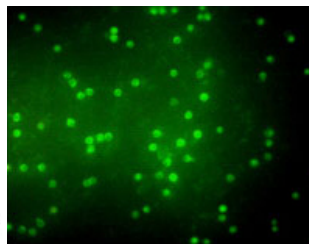
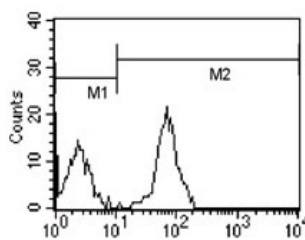
Product Type	Primary antibodies
Short Description	Mouse monoclonal antibody anti-T-Cell Surface Glycoprotein Cd3 Zeta Chain is suitable for use in Immunofluorescence, Immunocytochemistry and ELISA research applications.
Applications	IF, ICC, ELISA
Host/Source	Mouse
Reactivity	Human

PRODUCT PROPERTIES

Clonality	Monoclonal
Clone ID	4D10A6
Concentration	1 mg/mL
Conjugation	FITC
Purification	The antibody was isolated from ascitic fluid by immunoaffinity chromatography using antigens coupled to agarose beads.
Dilution Range	IF 1:200-1:1000 ELISA 1:10000
Formulation	PBS, 0.03% Sodium Azide.
Isotype	IgG2a
Storage	Store at -20°C for up to 1 year from the date of receipt, and avoid repeat freeze-thaw cycles.
Instruction	

TARGET INFORMATION

Gene ID	919
Gene Symbol	CD247
Uniprot ID	CD3Z_HUMAN
Immunogen	Purified recombinant fragment of human CD3 expressed in E.coli.
Immunogen Region	
Specificity	CD247 monoclonal antibody (T-Cell Surface Glycoprotein Cd3 Zeta Chain) binds to endogenous T-Cell Surface Glycoprotein Cd3 Zeta Chain.
Immunogen Sequence	



Immunofluorescence analysis of peripheral blood T cells using CD3 monoclonal antibody.

This product is suitable for in-vitro studies under the RESEARCH USE ONLY [RUO] licence. This product must not be used as for diagnostic or other medical purposes.
St John's Laboratory Ltd, Knowledge Dock Business Centre, University Way, London, E16 2RD | Tel: 0208 223 3081