

Anti-EPHA2 antibody [1B3C7] (STJ98024)

STJ98024

GENERAL INFORMATION

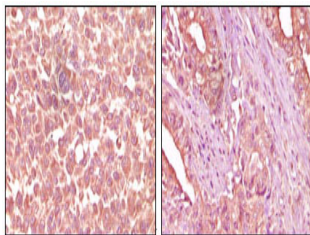
Product Type	Primary antibodies
Short Description	Mouse monoclonal antibody anti-Ephrin Type-A Receptor 2 is suitable for use in Western Blot, Immunohistochemistry, Immunofluorescence and ELISA research applications.
Applications	WB, IHC-P, IF-P, ELISA
Host/Source	Mouse
Reactivity	Human

PRODUCT PROPERTIES

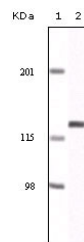
Clonality	Monoclonal
Clone ID	1B3C7
Concentration	
Conjugation	Unconjugated
Purification	The antibody was isolated from ascitic fluid by immunoaffinity chromatography using antigens coupled to agarose beads.
Dilution Range	WB 1:500-1:2000 IHC 1:200-1:1000 ELISA 1:10000
Formulation	Ascitic fluid, 0.03% Sodium Azide, 0.5% BSA, 50% Glycerol.
Isotype	IgM
Storage Instruction	Store at -20°C for up to 1 year from the date of receipt, and avoid repeat freeze-thaw cycles.

TARGET INFORMATION

Gene ID	1969
Gene Symbol	EPHA2
Uniprot ID	EPHA2_HUMAN
Immunogen	Purified recombinant fragment of EphA2 expressed in E.coli.
Immunogen Region	
Specificity	EPHA2 monoclonal antibody (Ephrin Type-A Receptor 2) binds to endogenous Ephrin Type-A Receptor 2.
Immunogen Sequence	



Immunohistochemistry analysis of paraffin-embedded human skin carcinoma (left) and pancreas carcinoma (right) tissue, showing cytoplasmic localization with DAB staining using EphA2 monoclonal antibody.



Western blot analysis using EphA2 monoclonal antibody against NIH/3T3 cell lysate.

This product is suitable for in-vitro studies under the RESEARCH USE ONLY [RUO] licence. This product must not be used as for diagnostic or other medical purposes.
St John's Laboratory Ltd, Knowledge Dock Business Centre, University Way, London, E16 2RD | Tel: 0208 223 3081