

Anti-HSPD1 antibody [3G8] (STJ98142)

STJ98142

GENERAL INFORMATION

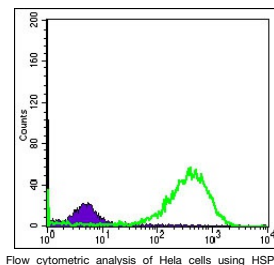
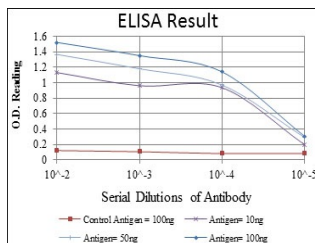
Product Type	Primary antibodies
Short Description	Mouse monoclonal antibody anti-60 Kda Heat Shock Protein-Mitochondrial is suitable for use in Western Blot, Immunohistochemistry, Immunofluorescence, Immunocytochemistry, Flow Cytometry and ELISA research applications.
Applications	WB, IHC-P, IF, ICC, FC, ELISA
Host/Source	Mouse
Reactivity	Human, Mouse, Rat, Monkey

PRODUCT PROPERTIES

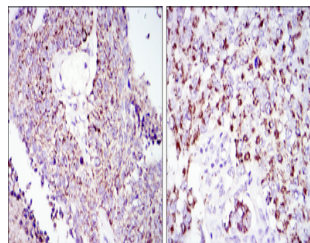
Clonality	Monoclonal
Clone ID	3G8
Concentration	
Conjugation	Unconjugated
Purification	The antibody was isolated from ascitic fluid by immunoaffinity chromatography using antigens coupled to agarose beads.
Dilution Range	WB 1:500-1:2000 IHC 1:200-1:1000 IF 1:200-1:1000 FC 1:200-1:400 ELISA 1:10000
Formulation	Ascitic fluid, 0.03% Sodium Azide, 0.5% BSA, 50% Glycerol.
Isotype	IgG1
Storage Instruction	Store at -20°C for up to 1 year from the date of receipt, and avoid repeat freeze-thaw cycles.

TARGET INFORMATION

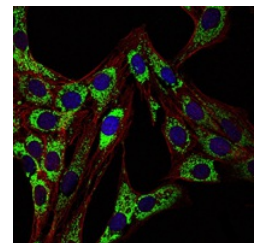
Gene ID	3329
Gene Symbol	HSPD1
Uniprot ID	CH60_HUMAN
Immunogen	Purified recombinant fragment of human HSP60 expressed in E.coli.
Immunogen Region	
Specificity	HSPD1 monoclonal antibody (60 Kda Heat Shock Protein-Mitochondrial) binds to endogenous 60 Kda Heat Shock Protein-Mitochondrial.
Immunogen Sequence	



Flow cytometric analysis of HeLa cells using HSP60 monoclonal antibody (green) and negative control (purple).



Immunohistochemistry analysis of paraffin-embedded lung cancer tissues (left) and kidney cancer tissues (right) with DAB staining using HSP60 monoclonal antibody.



Immunofluorescence analysis of 3T3-L1 cells using HSP60 monoclonal antibody (green). Blue: DRAQ5 fluorescent DNA dye. Red: Actin filaments have been labeled with Alexa Fluor-555 phalloidin.

This product is suitable for in-vitro studies under the RESEARCH USE ONLY [RUO] licence. This product must not be used as for diagnostic or other medical purposes.
St John's Laboratory Ltd, Knowledge Dock Business Centre, University Way, London, E16 2RD | Tel: 0208 223 3081