

Anti-KSHV K8 Alpha antibody [8C12G10G1] (STJ98207)

STJ98207

GENERAL INFORMATION

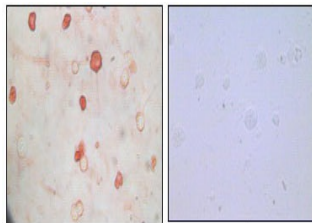
Product Type	Primary antibodies
Short Description	Mouse monoclonal antibody anti-KSHV K Alpha is suitable for use in Western Blot, Immunocytochemistry and ELISA research applications.
Applications	WB, ICC, ELISA
Host/Source	Mouse
Reactivity	KSHV

PRODUCT PROPERTIES

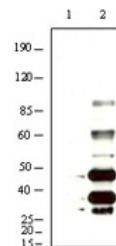
Clonality	Monoclonal
Clone ID	8C12G10G1
Concentration	
Conjugation	Unconjugated
Purification	The antibody was isolated from ascitic fluid by immunoaffinity chromatography using antigens coupled to agarose beads.
Dilution Range	WB 1:500-1:2000 ICC: 1:200-1:1000 ELISA 1:10000
Formulation	Ascitic fluid, 0.03% Sodium Azide, 0.5% BSA, 50% Glycerol.
Isotype	IgG2a
Storage Instruction	Store at -20°C for up to 1 year from the date of receipt, and avoid repeat freeze-thaw cycles.

TARGET INFORMATION

Gene ID	
Gene Symbol	
Uniprot ID	
Immunogen	Purified recombinant fragment of KSHV K8 Alpha expressed in E.coli.
Immunogen Region	
Specificity	
Immunogen Sequence	



Immunocytochemistry analysis of TPA induced BCBL-1 cells (A) and uninduced BCBL-1 cells (B) using KSHV K8 Alpha monoclonal antibody with AEC staining.



Western blot analysis using KSHV K8 Alpha monoclonal antibody against BCBL-1 (1) and TPA induced BCBL-1 (2) cell lysate.

This product is suitable for in-vitro studies under the RESEARCH USE ONLY [RUO] licence. This product must not be used as for diagnostic or other medical purposes.
St John's Laboratory Ltd, Knowledge Dock Business Centre, University Way, London, E16 2RD | Tel: 0208 223 3081