

## Anti-CCL2 antibody [1A7B8] (STJ98233)

STJ98233

### GENERAL INFORMATION

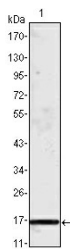
<b>Product Type</b>	Primary antibodies
<b>Short Description</b>	Mouse monoclonal antibody anti-C-C Motif Chemokine 2 is suitable for use in Western Blot and ELISA research applications.
<b>Applications</b>	WB, ELISA
<b>Host/Source</b>	Mouse
<b>Reactivity</b>	Human

### PRODUCT PROPERTIES

<b>Clonality</b>	Monoclonal
<b>Clone ID</b>	1A7B8
<b>Concentration</b>	1 mg/mL
<b>Conjugation</b>	Unconjugated
<b>Purification</b>	The antibody was isolated from ascitic fluid by immunoaffinity chromatography using antigens coupled to agarose beads.
<b>Dilution Range</b>	WB 1:500-1:2000 ELISA 1:10000
<b>Formulation</b>	PBS, 0.03% Sodium Azide.
<b>Isotype</b>	IgG1
<b>Storage Instruction</b>	Store at -20°C for up to 1 year from the date of receipt, and avoid repeat freeze-thaw cycles.

### TARGET INFORMATION

<b>Gene ID</b>	6347
<b>Gene Symbol</b>	CCL2
<b>Uniprot ID</b>	CCL2_HUMAN
<b>Immunogen</b>	Purified recombinant fragment of human MCP-1 expressed in E.coli.
<b>Immunogen Region</b>	
<b>Specificity</b>	CCL2 monoclonal antibody (C-C Motif Chemokine 2) binds to endogenous C-C Motif Chemokine 2.
<b>Immunogen Sequence</b>	



Western blot analysis using MCP-1 monoclonal antibody against truncated MCP-1 recombinant protein.

This product is suitable for in-vitro studies under the RESEARCH USE ONLY [RUO] licence. This product must not be used as for diagnostic or other medical purposes.  
St John's Laboratory Ltd, Knowledge Dock Business Centre, University Way, London, E16 2RD | Tel: 0208 223 3081