

Anti-COL4A1 antibody (1428-1443) (STJ98599)

STJ98599

GENERAL INFORMATION

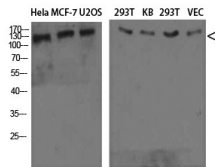
Product Type	Primary antibodies
Short Description	Rabbit polyclonal antibody anti-Collagen Alpha-1 (Iv Chain Cleaved Into-Arresten (1428-1443) is suitable for use in Western Blot and ELISA research applications.
Applications	WB, ELISA
Host/Source	Rabbit
Reactivity	Human, Mouse, Rat

PRODUCT PROPERTIES

Clonality	Polyclonal
Clone ID	
Concentration	1 mg/mL
Conjugation	Unconjugated
Purification	The antibody was affinity-purified from rabbit anti-serum by affinity-chromatography.
Dilution Range	WB 1:500-2000 ELISA 1:10000-20000
Formulation	PBS, 50% Glycerol, 0.5% BSA and 0.02% Sodium Azide.
Isotype	IgG
Storage Instruction	Store at -20°C for up to 1 year from the date of receipt, and avoid repeat freeze-thaw cycles.

TARGET INFORMATION

Gene ID	1282
Gene Symbol	COL4A1
Uniprot ID	CO4A1_HUMAN
Immunogen	Synthesized peptide derived from Collagen IV. at amino acid range: 1428-1443
Immunogen Region	1428-1443
Specificity	COL4A1 polyclonal antibody (Collagen Alpha-1 (Iv Chain Cleaved Into-Arresten) binds to endogenous Collagen Alpha-1 (Iv Chain Cleaved Into-Arresten at the amino acid region 1428-1443.
Immunogen Sequence	



Western blot analysis of HeLa MCF-7 U2OS 293T KB 293T VEC cells using Collagen IV Polyclonal Antibody diluted at 1:800. Secondary antibody was diluted at 1:20000