

Anti-Collagen I antibody (1200-1217) (STJ98600)

STJ98600

GENERAL INFORMATION

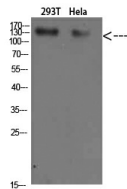
Product Type	Primary antibodies
Short Description	Rabbit polyclonal antibody anti-Collagen alpha-2 (I) chain and Collagen alpha-1 (I) chain (1200-1217) is suitable for use in Western Blot and ELISA research applications.
Applications	WB, ELISA
Host/Source	Rabbit
Reactivity	Human, Mouse, Rat

PRODUCT PROPERTIES

Clonality	Polyclonal
Clone ID	
Concentration	1 mg/mL
Conjugation	Unconjugated
Purification	The antibody was affinity-purified from rabbit anti-serum by affinity-chromatography.
Dilution	WB 1:500-2000
Range	ELISA 1:10000-20000
Formulation	PBS, 50% Glycerol, 0.5% BSA and 0.02% Sodium Azide.
Isotype	IgG
Storage	Store at -20°C for up to 1 year from the date of receipt, and avoid repeat freeze-thaw cycles.
Instruction	

TARGET INFORMATION

Gene ID	1277 1278
Gene Symbol	COL1A1 COL1A2
Uniprot ID	CO1A1_HUMAN CO1A2_HUMAN
Immunogen	Synthesized peptide derived from Collagen I. at amino acid range: 1200-1217
Immunogen Region	1200-1217
Specificity	Collagen I polyclonal antibody (Collagen alpha-2 (I) chain and Collagen alpha-1 (I) chain) binds to endogenous Collagen alpha-2 (I) chain and Collagen alpha-1 (I) chain at the amino acid region 1200-1217.
Immunogen Sequence	



Western blot analysis of 293T HeLa cells using Collagen I Polyclonal Antibody diluted at 1:500. Secondary antibody was diluted at 1:20000

This product is suitable for in-vitro studies under the RESEARCH USE ONLY [RUO] licence. This product must not be used as for diagnostic or other medical purposes.
St John's Laboratory Ltd, Knowledge Dock Business Centre, University Way, London, E16 2RD | Tel: 0208 223 3081