

Anti-FAM3D antibody (121-170) (STJ98609)

STJ98609

GENERAL INFORMATION

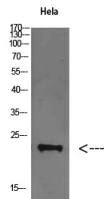
Product Type	Primary antibodies
Short Description	Rabbit polyclonal antibody anti-Protein Fam3d (121-170) is suitable for use in Western Blot and ELISA research applications.
Applications	WB, ELISA
Host/Source	Rabbit
Reactivity	Human, Rat, Mouse

PRODUCT PROPERTIES

Clonality	Polyclonal
Clone ID	
Concentration	1 mg/mL
Conjugation	Unconjugated
Purification	The antibody was affinity-purified from rabbit anti-serum by affinity-chromatography.
Dilution Range	WB 1:500-2000 ELISA 1:10000-20000
Formulation	PBS, 50% Glycerol, 0.5% BSA and 0.02% Sodium Azide.
Isotype	IgG
Storage Instruction	Store at -20°C for up to 1 year from the date of receipt, and avoid repeat freeze-thaw cycles.

TARGET INFORMATION

Gene ID	131177
Gene Symbol	FAM3D
Uniprot ID	FAM3D_HUMAN
Immunogen	The antiserum was produced against synthesized peptide derived from the Internal region of human FAM3D at amino acid range 121-170
Immunogen Region	121-170
Specificity	FAM3D polyclonal antibody (Protein Fam3d) binds to endogenous Protein Fam3d at the amino acid region 121-170.
Immunogen Sequence	



Western blot analysis of HeLa cells using FAM3D Polyclonal Antibody diluted at 1:500. Secondary antibody was diluted at 1:20000