

Anti-TUBB antibody [1E1-E8-H4] (STJ99132)

STJ99132

GENERAL INFORMATION

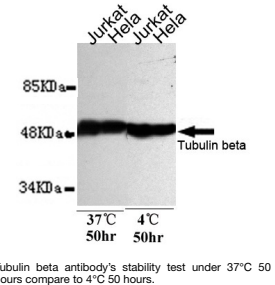
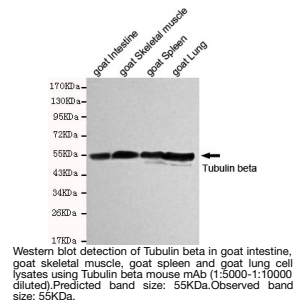
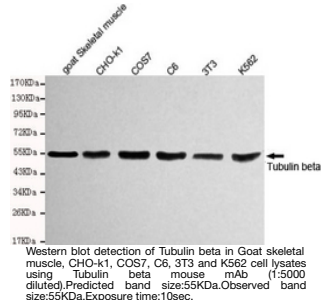
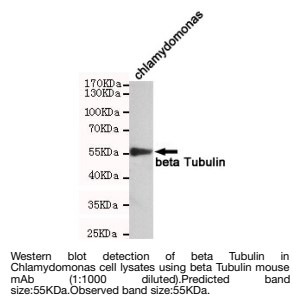
Product Type	Primary antibodies
Short Description	Mouse monoclonal antibody anti-Tubulin Beta Chain is suitable for use in Western Blot, Immunofluorescence and Immunocytochemistry research applications.
Applications	WB, IF, ICC
Host/Source	Mouse
Reactivity	Human, Mouse, Simian, Goat, Hamster, Rat, Chlamydomonas

PRODUCT PROPERTIES

Clonality	Monoclonal
Clone ID	1E1-E8-H4
Concentration	1 mg/mL
Conjugation	Unconjugated
Purification	The antibody was isolated from ascitic fluid by immunoaffinity chromatography using antigens coupled to agarose beads.
Dilution Range	WB 1:5000 ICC 1:500
Formulation	PBS, 50% Glycerol, 0.5% BSA and 0.02% Sodium Azide.
Isotype	IgG1
Storage	Store at -20°C for up to 1 year from the date of receipt, and avoid repeat freeze-thaw cycles.
Instruction	

TARGET INFORMATION

Gene ID	203068
Gene Symbol	TUBB
Uniprot ID	TBB5_HUMAN
Immunogen	Purified recombinant human Tubulin beta protein fragments expressed in E.coli.
Immunogen Region	
Specificity	TUBB monoclonal antibody (Tubulin Beta Chain) binds to endogenous Tubulin Beta Chain.
Immunogen Sequence	



This product is suitable for in-vitro studies under the RESEARCH USE ONLY [RUO] licence. This product must not be used as for diagnostic or other medical purposes.
St John's Laboratory Ltd, Knowledge Dock Business Centre, University Way, London, E16 2RD | Tel: 0208 223 3081