

## Anti-MMP2 antibody [3A8-C1-E8] (STJ99213)

STJ99213

### GENERAL INFORMATION

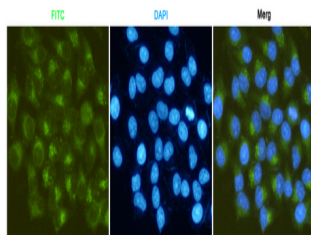
<b>Product Type</b>	Primary antibodies
<b>Short Description</b>	Mouse monoclonal antibody anti-72 Kda Type Iv Collagenase is suitable for use in Western Blot, Immunofluorescence, Immunocytochemistry and Immunocytochemistry research applications.
<b>Applications</b>	WB, IF, ICC, ICC
<b>Host/Source</b>	Mouse
<b>Reactivity</b>	Rat, Human

### PRODUCT PROPERTIES

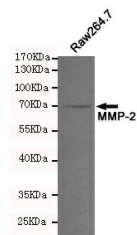
<b>Clonality</b>	Monoclonal
<b>Clone ID</b>	3A8-C1-E8
<b>Concentration</b>	1 mg/mL
<b>Conjugation</b>	Unconjugated
<b>Purification</b>	The antibody was isolated from ascitic fluid by immunoaffinity chromatography using antigens coupled to agarose beads.
<b>Dilution Range</b>	WB 1:1000
<b>Formulation</b>	PBS, 50% Glycerol, 0.5% BSA and 0.02% Sodium Azide.
<b>Isotype</b>	IgG1
<b>Storage Instruction</b>	Store at -20°C for up to 1 year from the date of receipt, and avoid repeat freeze-thaw cycles.

### TARGET INFORMATION

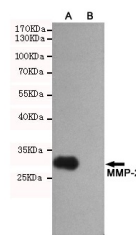
<b>Gene ID</b>	4313
<b>Gene Symbol</b>	MMP2
<b>Uniprot ID</b>	MMP2_HUMAN
<b>Immunogen</b>	Purified recombinant human MMP-2 protein expressed in E.coli.
<b>Region</b>	
<b>Specificity</b>	MMP2 monoclonal antibody (72 Kda Type Iv Collagenase) binds to endogenous 72 Kda Type Iv Collagenase.
<b>Immunogen Sequence</b>	



Immunofluorescent analysis of HeLa cells fixed by anhydrous methanol at -20°C and using MMP-2 mouse mAb (dilution 1:50). DAPI was used to stain nucleus (blue).



Western blot analysis of extracts from Raw264.7 cell lysates using MMP-2 mouse mAb (1:200 diluted). Predicted band size: 64, 72kDa. Observed band size: 72kDa.



Western blot analysis of extracts from CHO-K1 (B) and CHO-K1 transfected by MMP-2 fragment (A) cell lysates using MMP-2 mouse mAb (1:2000 diluted). Predicted band size: 30kDa. Observed band size: 30kDa.

This product is suitable for in-vitro studies under the RESEARCH USE ONLY [RUO] licence. This product must not be used as for diagnostic or other medical purposes.  
 St John's Laboratory Ltd, Knowledge Dock Business Centre, University Way, London, E16 2RD | Tel: 0208 223 3081