

Anti-HSPD1 antibody [6C8-G1-B10] (STJ99241)

STJ99241

GENERAL INFORMATION

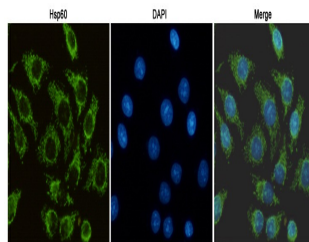
Product Type	Primary antibodies
Short Description	Mouse monoclonal antibody anti-60 Kda Heat Shock Protein-Mitochondrial is suitable for use in Western Blot, Immunofluorescence, Immunocytochemistry and Immunoprecipitation research applications.
Applications	WB, IF, ICC, IP
Host/Source	Mouse
Reactivity	Human, Mouse, Rat

PRODUCT PROPERTIES

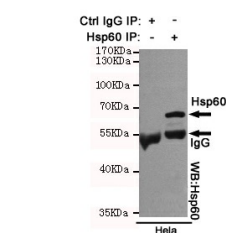
Clonality	Monoclonal
Clone ID	6C8-G1-B10
Concentration	1 mg/mL
Conjugation	Unconjugated
Purification	The antibody was isolated from ascitic fluid by immunoaffinity chromatography using antigens coupled to agarose beads.
Dilution Range	WB 1:1000 ICC 1:100 IP 1:100
Formulation	PBS, 50% Glycerol, 0.5% BSA and 0.02% Sodium Azide.
Isotype	IgG2b
Storage Instruction	Store at -20°C for up to 1 year from the date of receipt, and avoid repeat freeze-thaw cycles.

TARGET INFORMATION

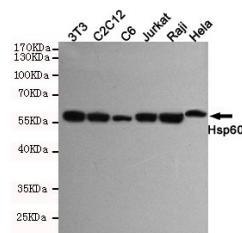
Gene ID	3329
Gene Symbol	HSPD1
Uniprot ID	CH60_HUMAN
Immunogen	Purified recombinant human Hsp60 protein fragments expressed in E.coli.
Region	
Specificity	HSPD1 monoclonal antibody (60 Kda Heat Shock Protein-Mitochondrial) binds to endogenous 60 Kda Heat Shock Protein-Mitochondrial.
Immunogen Sequence	



Immunofluorescence staining of HeLa cells fixed with 20°C Methanol and using Hsp60 mouse mAb (dilution 1:100).



Immunoprecipitation analysis of HeLa cell lysates using Hsp60 mouse mAb.



Western blot detection of Hsp60 in HeLa, Raji, Jurkat, C6, C2C12 and 3T3 cell lysates using Hsp60 mouse mAb (1:1000 diluted). Predicted band size: 60KDa. Observed band size: 60KDa.

This product is suitable for in-vitro studies under the RESEARCH USE ONLY [RUO] licence. This product must not be used as for diagnostic or other medical purposes.
St John's Laboratory Ltd, Knowledge Dock Business Centre, University Way, London, E16 2RD | Tel: 0208 223 3081