

Anti-MAP1LC3A antibody [4C8-B7-B9] (STJ99258)

STJ99258

GENERAL INFORMATION

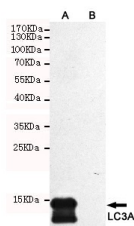
Product Type	Primary antibodies
Short Description	Mouse monoclonal antibody anti-Microtubule-Associated Proteins 1a/1b Light Chain 3a is suitable for use in Western Blot research applications.
Applications	WB
Host/Source	Mouse
Reactivity	Human

PRODUCT PROPERTIES

Clonality	Monoclonal
Clone ID	4C8-B7-B9
Concentration	1 mg/mL
Conjugation	Unconjugated
Purification	The antibody was isolated from ascitic fluid by immunoaffinity chromatography using antigens coupled to agarose beads.
Dilution Range	WB 1:2000
Formulation	PBS, 50% Glycerol, 0.5% BSA and 0.02% Sodium Azide.
Isotype	IgG1
Storage Instruction	Store at -20°C for up to 1 year from the date of receipt, and avoid repeat freeze-thaw cycles.

TARGET INFORMATION

Gene ID	84557
Gene Symbol	MAP1LC3A
Uniprot ID	MLP3A_HUMAN
Immunogen	Recombinant protein of human LC3A.
Immunogen Region	
Specificity	
Immunogen Sequence	



Western blot detection of LC3A in CHO-K1 cell lysate (B) and CHO-K1 transfected by LC3A (A) cell lysate using LC3A mouse mAb (1:2000 diluted).

This product is suitable for in-vitro studies under the RESEARCH USE ONLY [RUO] licence. This product must not be used as for diagnostic or other medical purposes.
St John's Laboratory Ltd, Knowledge Dock Business Centre, University Way, London, E16 2RD | Tel: 0208 223 3081