

Anti-UBB antibody (1-100) (STJ11100159)

STJ11100159

GENERAL INFORMATION

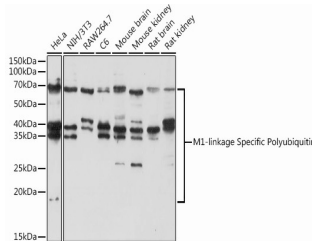
Product Type	Primary antibodies
Short Description	Rabbit polyclonal antibody anti-M1-linkage Specific Polyubiquitin (1-100) is suitable for use in Western Blot.
Applications	WB
Host/Source	Rabbit
Reactivity	ALL

PRODUCT PROPERTIES

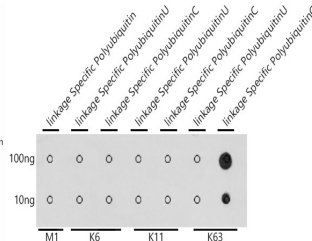
Clonality	Polyclonal
Clone ID	
Concentration	
Conjugation	Unconjugated
Purification	Affinity purification
Dilution Range	WB 1:500-1:2000
Formulation	PBS containing 0.02% Sodium Azide, 50% Glycerol, pH7.3.
Isotype	IgG
Storage Instruction	Store in a freezer at -20°C and avoid freeze-thaw cycles.

TARGET INFORMATION

Gene ID	
Gene Symbol	
Uniprot ID	
Immunogen	A synthetic peptide corresponding to a sequence within amino acids 1-100 of human M1-linkage Specific Polyubiquitin (NP_066289.3/NP_061828.1).
Immunogen Region	1-100
Specificity	
Immunogen Sequence	



Western blot analysis of extracts of various cell lines, using M1-linkage Specific Polyubiquitin antibody (STJ11100159) at 1:1000 dilution. Secondary antibody: HRP Goat Anti-rabbit IgG (H+L) at 1:10000 dilution. Lysates/proteins: 25ug per lane. Blocking buffer: 3% nonfat dry milk in TBST. Detection: ECL Basic Kit. Exposure time: 90s.



Dot-blot analysis of all sorts of peptides using M1-linkage Specific Polyubiquitin antibody (STJ11100159) at 1:1000 dilution.

This product is suitable for in-vitro studies under the RESEARCH USE ONLY [RUO] licence. This product must not be used as for diagnostic or other medical purposes.
St John's Laboratory Ltd, Knowledge Dock Business Centre, University Way, London, E16 2RD | Tel: 0208 223 3081