

Anti-RPE65 antibody (274-533) (STJ111883)

STJ111883

GENERAL INFORMATION

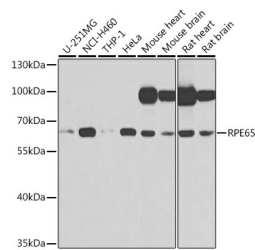
Product Type	Primary antibodies
Short Description	Rabbit polyclonal antibody anti-RPE65 (274-533) is suitable for use in Western Blot and Immunofluorescence.
Applications	WB, IF
Host/Source	Rabbit
Reactivity	Human, Mouse, Rat

PRODUCT PROPERTIES

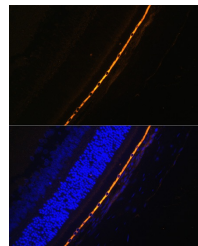
Clonality	Polyclonal
Clone ID	
Concentration	
Conjugation	Unconjugated
Purification	Affinity purification
Dilution Range	WB 1:500-1:2000 IF 1:50-1:200
Formulation	PBS containing 0.02% Sodium Azide, 50% Glycerol, pH7.3.
Isotype	IgG
Storage Instruction	Store in a freezer at -20°C and avoid freeze-thaw cycles.

TARGET INFORMATION

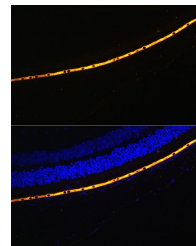
Gene ID	6121
Gene Symbol	RPE65
Uniprot ID	RPE65_HUMAN
Immunogen	Recombinant fusion protein containing a sequence corresponding to amino acids 274-533 of human RPE65 (NP_000320.1).
Immunogen Region	274-533
Specificity	
Immunogen Sequence	



Western blot analysis of extracts of various cell lines, using RPE65 antibody (STJ111883) at 1:1000 dilution. Secondary antibody: HRP Goat Anti-rabbit IgG (H+L) at 1:10000 dilution. Lysates/proteins: 25µg per lane. Blocking buffer: 3% nonfat dry milk in TBST. Detection: ECL Basic Kit. Exposure time: 5s.



Immunofluorescence analysis of Rat eye cells using RPE65 antibody (STJ111883) at dilution of 1:100. Blue: DAPI for nuclear staining.



Immunofluorescence analysis of mouse eye cells using RPE65 antibody (STJ111883) at dilution of 1:100. Blue: DAPI for nuclear staining.

This product is suitable for in-vitro studies under the RESEARCH USE ONLY [RUO] licence. This product must not be used as for diagnostic or other medical purposes.
St John's Laboratory Ltd, Knowledge Dock Business Centre, University Way, London, E16 2RD | Tel: 0208 223 3081