

Anti-SLC27A1 antibody (347-646) (STJ114713)

STJ114713

GENERAL INFORMATION

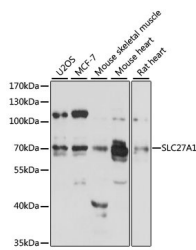
Product Type	Primary antibodies
Short Description	Rabbit polyclonal antibody anti-SLC27A1 (347-646) is suitable for use in Western Blot.
Applications	WB
Host/Source	Rabbit
Reactivity	Human, Mouse, Rat

PRODUCT PROPERTIES

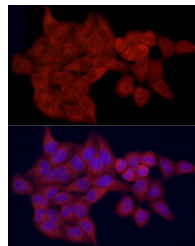
Clonality	Polyclonal
Clone ID	
Concentration	
Conjugation	Unconjugated
Purification	Affinity purification
Dilution Range	WB 1:1000-1:2000
Formulation	PBS containing 0.02% Sodium Azide, 50% Glycerol, pH7.3.
Isotype	IgG
Storage Instruction	Store in a freezer at -20°C and avoid freeze-thaw cycles.

TARGET INFORMATION

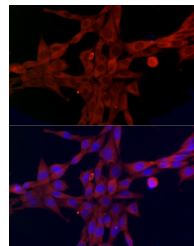
Gene ID	376497
Gene Symbol	SLC27A1
Uniprot ID	S27A1_HUMAN
Immunogen	Recombinant fusion protein containing a sequence corresponding to amino acids 347-646 of human SLC27A1 (NP_940982.1).
Immunogen Region	347-646
Specificity	
Immunogen Sequence	



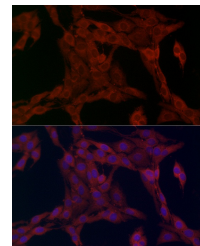
Western blot analysis of extracts of various cell lines, using SLC27A1 antibody (STJ114713) at 1:3000 dilution. Secondary antibody: HRP Goat Anti-rabbit IgG (H+L) at 1:10000 dilution. Lysates/proteins: 25ug per lane. Blocking buffer: 3% nonfat dry milk in TBST. Detection: ECL Enhanced Kit. Exposure time: 30s.



Immunofluorescence analysis of HeLa cells using SLC27A1 rabbit polyclonal antibody (STJ114713) at dilution of 1:100 (40x lens). Blue: DAPI for nuclear staining.



Immunofluorescence analysis of NIH/3T3 cells using SLC27A1 rabbit polyclonal antibody (STJ114713) at dilution of 1:100 (40x lens). Blue: DAPI for nuclear staining.



Immunofluorescence analysis of PC-12 cells using SLC27A1 rabbit polyclonal antibody (STJ114713) at dilution of 1:100 (40x lens). Blue: DAPI for nuclear staining.

This product is suitable for in-vitro studies under the RESEARCH USE ONLY [RUO] licence. This product must not be used as for diagnostic or other medical purposes.
 St John's Laboratory Ltd, Knowledge Dock Business Centre, University Way, London, E16 2RD | Tel: 0208 223 3081