

Anti-CHAT antibody (331-630) (STJ115210)

STJ115210

GENERAL INFORMATION

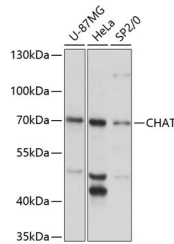
Product Type	Primary antibodies
Short Description	Rabbit polyclonal antibody anti-CHAT (331-630) is suitable for use in Western Blot, Immunohistochemistry and Immunofluorescence.
Applications	WB, IHC, IF
Host/Source	Rabbit
Reactivity	Human, Mouse, Rat

PRODUCT PROPERTIES

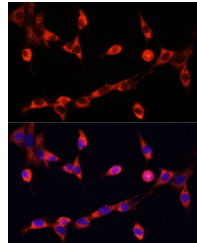
Clonality	Polyclonal
Clone ID	
Concentration	
Conjugation	Unconjugated
Purification	Affinity purification
Dilution Range	WB 1:1000-1:2000 IHC 1:50-1:200 IF 1:50-1:200
Formulation	PBS containing 0.02% Sodium Azide, 50% Glycerol, pH7.3.
Isotype	IgG
Storage Instruction	Store in a freezer at -20°C and avoid freeze-thaw cycles.

TARGET INFORMATION

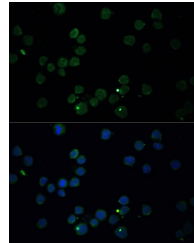
Gene ID	1103
Gene Symbol	CHAT
Uniprot ID	CLAT_HUMAN
Immunogen	Recombinant fusion protein containing a sequence corresponding to amino acids 331-630 of human CHAT (NP_001136401.1).
Immunogen Region	331-630
Specificity	
Immunogen Sequence	



Western blot analysis of extracts of various cell lines, using CHAT antibody (STJ115210) at 1:3000 dilution. Secondary antibody: HRP Goat Anti-rabbit IgG (H+L) at 1:10000 dilution. Lysates/proteins: 25µg per lane. Blocking buffer: 3% nonfat dry milk in TBST. Detection: ECL Basic Kit. Exposure time: 10s.



Immunofluorescence analysis of NIH/3T3 cells using CHAT antibody (STJ115210) at dilution of 1:100. Blue: DAPI for nuclear staining.



Immunofluorescence analysis of THP-1 cells using CHAT antibody (STJ115210) at dilution of 1:100. Blue: DAPI for nuclear staining.