

Anti-CSR3 antibody (1-194) (STJ115335)

STJ115335

GENERAL INFORMATION

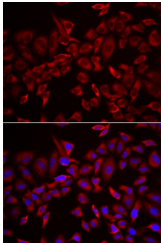
Product Type	Primary antibodies
Short Description	Rabbit polyclonal antibody anti-CSR3 (1-194) is suitable for use in Immunofluorescence.
Applications	IF
Host/Source	Rabbit
Reactivity	Human

PRODUCT PROPERTIES

Clonality	Polyclonal
Clone ID	
Concentration	
Conjugation	Unconjugated
Purification	Affinity purification
Dilution Range	IF 1:50-1:200
Formulation	PBS containing 0.02% Sodium Azide, 50% Glycerol, pH7.3.
Isotype	IgG
Storage Instruction	Store in a freezer at -20°C and avoid freeze-thaw cycles.

TARGET INFORMATION

Gene ID	8048
Gene Symbol	CSR3
Uniprot ID	CSR3_HUMAN
Immunogen	Recombinant fusion protein containing a sequence corresponding to amino acids 1-194 of human CSR3 (NP_003467.1).
Immunogen Region	1-194
Specificity	
Immunogen Sequence	



Immunofluorescence analysis of HeLa cells using CSR3 antibody (STJ115335). Blue: DAPI for nuclear staining.