

Anti-ALAS1 antibody (1-250) (STJ115423)

STJ115423

GENERAL INFORMATION

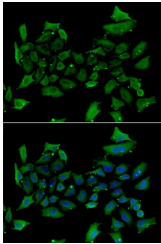
Product Type	Primary antibodies
Short Description	Rabbit polyclonal antibody anti-ALAS1 (1-250) is suitable for use in Western Blot and Immunofluorescence.
Applications	WB, IF
Host/Source	Rabbit
Reactivity	Human, Mouse, Rat

PRODUCT PROPERTIES

Clonality	Polyclonal
Clone ID	
Concentration	
Conjugation	Unconjugated
Purification	Affinity purification
Dilution Range	WB 1:500-1:2000 IF 1:50-1:200
Formulation	PBS containing 0.02% Sodium Azide, 50% Glycerol, pH7.3.
Isotype	IgG
Storage Instruction	Store in a freezer at -20°C and avoid freeze-thaw cycles.

TARGET INFORMATION

Gene ID	211
Gene Symbol	ALAS1
Uniprot ID	HEM1_HUMAN
Immunogen	Recombinant fusion protein containing a sequence corresponding to amino acids 1-250 of human ALAS1 (NP_954635.1).
Immunogen Region	1-250
Specificity	
Immunogen Sequence	



Immunofluorescence analysis of HeLa cells using ALAS1 antibody (STJ115423). Blue: DAPI for nuclear staining.