

Anti-CHD2 antibody (242-501) (STJ115437)

STJ115437

GENERAL INFORMATION

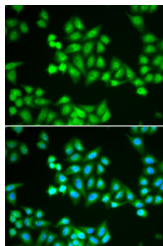
Product Type	Primary antibodies
Short Description	Rabbit polyclonal antibody anti-CHD2 (242-501) is suitable for use in Immunofluorescence.
Applications	IF
Host/Source	Rabbit
Reactivity	Human

PRODUCT PROPERTIES

Clonality	Polyclonal
Clone ID	
Concentration	
Conjugation	Unconjugated
Purification	Affinity purification
Dilution Range	IF 1:50-1:200
Formulation	PBS containing 0.02% Sodium Azide, 50% Glycerol, pH7.3.
Isotype	IgG
Storage Instruction	Store in a freezer at -20°C and avoid freeze-thaw cycles.

TARGET INFORMATION

Gene ID	1106
Gene Symbol	CHD2
Uniprot ID	CHD2_HUMAN
Immunogen	Recombinant fusion protein containing a sequence corresponding to amino acids 242-501 of human CHD2 (NP_001036037.1).
Immunogen Region	242-501
Specificity	
Immunogen Sequence	



Immunofluorescence analysis of HeLa cells using CHD2 antibody (STJ115437). Blue: DAPI for nuclear staining.