

Anti-SLC25A27 antibody (1-245) (STJ115775)

STJ115775

GENERAL INFORMATION

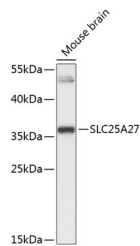
Product Type	Primary antibodies
Short Description	Rabbit polyclonal antibody anti-SLC25A27 (1-245) is suitable for use in Western Blot and Immunofluorescence.
Applications	WB, IF
Host/Source	Rabbit
Reactivity	Mouse, Rat

PRODUCT PROPERTIES

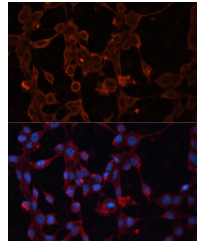
Clonality	Polyclonal
Clone ID	
Concentration	
Conjugation	Unconjugated
Purification	Affinity purification
Dilution Range	WB 1:500-1:2000 IF 1:50-1:200
Formulation	PBS containing 0.02% Sodium Azide, 50% Glycerol, pH7.3.
Isotype	IgG
Storage Instruction	Store in a freezer at -20°C and avoid freeze-thaw cycles.

TARGET INFORMATION

Gene ID	9481
Gene Symbol	SLC25A27
Uniprot ID	UCP4_HUMAN
Immunogen	Recombinant fusion protein containing a sequence corresponding to amino acids 1-245 of human SLC25A27 (NP_001190981.1).
Immunogen Region	1-245
Specificity	
Immunogen Sequence	



Western blot analysis of extracts of mouse brain, using SLC25A27 Antibody (STJ115775) at 1:3000 dilution. Secondary antibody: HRP Goat Anti-rabbit IgG (H+L) at 1:10000 dilution. Lysates/proteins: 25ug per lane. Blocking buffer: 3% nonfat dry milk in TBST. Detection: ECL Basic Kit. Exposure time: 30s.



Immunofluorescence analysis of NIH/3T3 cells using SLC25A27 antibody (STJ115775) at dilution of 1:100. Blue: DAPI for nuclear staining.