

Anti-KNG1 antibody (148-427) (STJ115855)

STJ115855

GENERAL INFORMATION

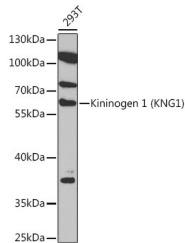
Product Type	Primary antibodies
Short Description	Rabbit polyclonal antibody anti-KNG1 (148-427) is suitable for use in Western Blot and Immunohistochemistry.
Applications	WB, IHC
Host/Source	Rabbit
Reactivity	Human, Mouse, Rat

PRODUCT PROPERTIES

Clonality	Polyclonal
Clone ID	
Concentration	
Conjugation	Unconjugated
Purification	Affinity purification
Dilution Range	WB 1:500-1:2000 IHC 1:50-1:200
Formulation	PBS containing 0.02% Sodium Azide, 50% Glycerol, pH7.3.
Isotype	IgG
Storage	Store in a freezer at -20°C and avoid freeze-thaw cycles.
Instruction	

TARGET INFORMATION

Gene ID	3827
Gene Symbol	KNG1
Uniprot ID	KNG1_HUMAN
Immunogen	Recombinant fusion protein containing a sequence corresponding to amino acids 148-427 of human Kininogen 1 (Kininogen 1 (KNG1)) (NP_000884.1).
Immunogen Region	148-427
Specificity	
Immunogen Sequence	



Western blot analysis of extracts of 293T cells, using Kininogen 1 (Kininogen 1 (KNG1)) rabbit polyclonal antibody (STJ115855) at 1:1000 dilution. Secondary antibody: HRP Goat Anti-rabbit IgG (H+L) at 1:10000 dilution. Lysates/proteins: 25ug per lane. Blocking buffer: 3% nonfat dry milk in TBST. Detection: ECL Basic Kit.

This product is suitable for in-vitro studies under the RESEARCH USE ONLY [RUO] licence. This product must not be used as for diagnostic or other medical purposes.
St John's Laboratory Ltd, Knowledge Dock Business Centre, University Way, London, E16 2RD | Tel: 0208 223 3081