

Anti-SGCA antibody (60-290) (STJ116232)

STJ116232

GENERAL INFORMATION

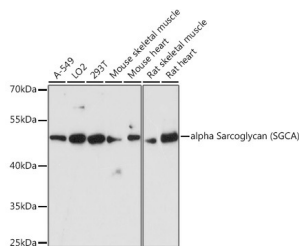
Product Type	Primary antibodies
Short Description	Rabbit polyclonal antibody anti-SGCA (60-290) is suitable for use in Western Blot and Immunofluorescence.
Applications	WB, IF
Host/Source	Rabbit
Reactivity	Human, Mouse, Rat

PRODUCT PROPERTIES

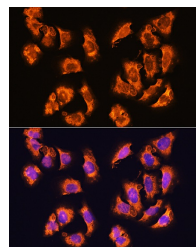
Clonality	Polyclonal
Clone ID	
Concentration	
Conjugation	Unconjugated
Purification	Affinity purification
Dilution Range	WB 1:500-1:2000 IF 1:50-1:200
Formulation	PBS containing 0.02% Sodium Azide, 50% Glycerol, pH7.3.
Isotype	IgG
Storage	Store in a freezer at -20°C and avoid freeze-thaw cycles.
Instruction	

TARGET INFORMATION

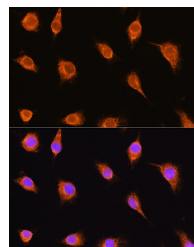
Gene ID	6442
Gene Symbol	SGCA
Uniprot ID	SGCA_HUMAN
Immunogen	Recombinant fusion protein containing a sequence corresponding to amino acids 60-290 of human alpha Sarcoglycan (alpha Sarcoglycan (SGCA)) (NP_000014.1).
Immunogen Region	60-290
Specificity	
Immunogen Sequence	



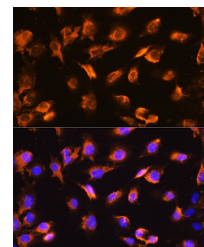
Western blot analysis of extracts of various cell lines, using alpha Sarcoglycan (alpha Sarcoglycan (SGCA)) antibody (STJ116232) at 1:3000 dilution. Secondary antibody: HRP Goat Anti-rabbit IgG (H+L) at 1:10000 dilution. Lysates/proteins: 25ug per lane. Blocking buffer: 3% nonfat dry milk in TBST. Detection: ECL Basic Kit. Exposure time: 90s.



Immunofluorescence analysis of U2OS cells using alpha Sarcoglycan (alpha Sarcoglycan (SGCA)) rabbit polyclonal antibody (STJ116232) at dilution of 1:100. Blue: DAPI for nuclear staining.



Immunofluorescence analysis of L929 cells using alpha Sarcoglycan (alpha Sarcoglycan (SGCA)) rabbit polyclonal antibody (STJ116232) at dilution of 1:100. Blue: DAPI for nuclear staining.



Immunofluorescence analysis of C6 cells using alpha Sarcoglycan (alpha Sarcoglycan (SGCA)) rabbit polyclonal antibody (STJ116232) at dilution of 1:100. Blue: DAPI for nuclear staining.

This product is suitable for in-vitro studies under the RESEARCH USE ONLY [RUO] licence. This product must not be used as for diagnostic or other medical purposes.
St John's Laboratory Ltd, Knowledge Dock Business Centre, University Way, London, E16 2RD | Tel: 0208 223 3081