

Anti-PPP2R5B antibody (1-130) (STJ116465)

STJ116465

GENERAL INFORMATION

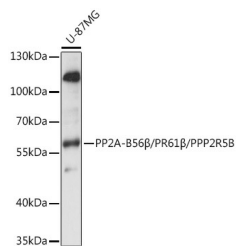
Product Type	Primary antibodies
Short Description	Rabbit polyclonal antibody anti-PPP2R5B (1-130) is suitable for use in Western Blot.
Applications	WB
Host/Source	Rabbit
Reactivity	Human

PRODUCT PROPERTIES

Clonality	Polyclonal
Clone ID	
Concentration	
Conjugation	Unconjugated
Purification	Affinity purification
Dilution Range	WB 1:500-1:2000
Formulation	PBS containing 0.02% Sodium Azide, 50% Glycerol, pH7.3.
Isotype	IgG
Storage	Store in a freezer at -20°C and avoid freeze-thaw cycles.
Instruction	

TARGET INFORMATION

Gene ID	5526
Gene Symbol	PPP2R5B
Uniprot ID	2A5B_HUMAN
Immunogen	Recombinant fusion protein containing a sequence corresponding to amino acids 1-130 of human PP2A-B56 Beta/PR61 Beta/PP2A-B56 Beta/PR61 Beta/PPP2R5B (NP_006235.1).
Immunogen Region	1-130
Specificity	
Immunogen Sequence	



Western blot analysis of extracts of U-87MG cells, using PP2A-B56 Beta/PR61 Beta/PP2A-B56 Beta/PR61 Beta/PPP2R5B antibody (STJ116465) at 1:1000 dilution. Secondary antibody: HRP Goat Anti-rabbit IgG (H+L) at 1:10000 dilution. Lysates/proteins: 25ug per lane. Blocking buffer: 3% nonfat dry milk in TBST. Detection: ECL Basic Kit. Exposure time: 1s.

This product is suitable for in-vitro studies under the RESEARCH USE ONLY [RUO] licence. This product must not be used as for diagnostic or other medical purposes.
 St John's Laboratory Ltd, Knowledge Dock Business Centre, University Way, London, E16 2RD | Tel: 0208 223 3081