

Anti-CSH1 antibody (27-207) (STJ116739)

STJ116739

GENERAL INFORMATION

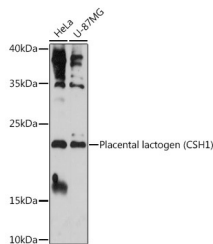
Product Type	Primary antibodies
Short Description	Rabbit polyclonal antibody anti-CSH1 (27-207) is suitable for use in Western Blot.
Applications	WB
Host/Source	Rabbit
Reactivity	Human

PRODUCT PROPERTIES

Clonality	Polyclonal
Clone ID	
Concentration	
Conjugation	Unconjugated
Purification	Affinity purification
Dilution Range	WB 1:500-1:2000
Formulation	PBS containing 0.02% Sodium Azide, 50% Glycerol, pH7.3.
Isotype	IgG
Storage	Store in a freezer at -20°C and avoid freeze-thaw cycles.
Instruction	

TARGET INFORMATION

Gene ID	1442
Gene Symbol	CSH1
Uniprot ID	CSH1_HUMAN
Immunogen	Recombinant fusion protein containing a sequence corresponding to amino acids 27-207 of human Placental lactogen (Placental lactogen (CSH1)) (NP_001308.1).
Immunogen Region	27-207
Specificity	
Immunogen Sequence	



Western blot analysis of extracts of various cell lines, using Placental lactogen (Placental lactogen (CSH1)) antibody (STJ116739) at 1:3000 dilution. Secondary antibody: HRP Goat Anti-rabbit IgG (H+L) at 1:10000 dilution. Lysates/proteins: 25µg per lane. Blocking buffer: 3% nonfat dry milk in TBST. Detection: ECL Basic Kit. Exposure time: 90s.

This product is suitable for in-vitro studies under the RESEARCH USE ONLY [RUO] licence. This product must not be used as for diagnostic or other medical purposes.
 St John's Laboratory Ltd, Knowledge Dock Business Centre, University Way, London, E16 2RD | Tel: 0208 223 3081