

## Anti-ALDH1B1 antibody (278-517) (STJ117219)

STJ117219

### GENERAL INFORMATION

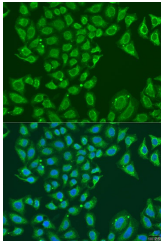
<b>Product Type</b>	Primary antibodies
<b>Short Description</b>	Rabbit polyclonal antibody anti-ALDH1B1 (278-517) is suitable for use in Western Blot and Immunofluorescence.
<b>Applications</b>	WB, IF
<b>Host/Source</b>	Rabbit
<b>Reactivity</b>	Human

### PRODUCT PROPERTIES

<b>Clonality</b>	Polyclonal
<b>Clone ID</b>	
<b>Concentration</b>	
<b>Conjugation</b>	Unconjugated
<b>Purification</b>	Affinity purification
<b>Dilution Range</b>	WB 1:500-1:2000 IF 1:50-1:200
<b>Formulation</b>	PBS containing 0.02% Sodium Azide, 50% Glycerol, pH7.3.
<b>Isotype</b>	IgG
<b>Storage Instruction</b>	Store in a freezer at -20°C and avoid freeze-thaw cycles.

### TARGET INFORMATION

<b>Gene ID</b>	219
<b>Gene Symbol</b>	ALDH1B1
<b>Uniprot ID</b>	AL1B1_HUMAN
<b>Immunogen</b>	Recombinant fusion protein containing a sequence corresponding to amino acids 278-517 of human ALDH1B1 (NP_000683.3).
<b>Immunogen Region</b>	278-517
<b>Specificity</b>	
<b>Immunogen Sequence</b>	



Immunofluorescence analysis of U2OS cells using ALDH1B1 antibody (STJ117219) at dilution of 1:100. Blue: DAPI for nuclear staining.