

Anti-KRT14 antibody (C-Term) (STJ117263)

STJ117263

GENERAL INFORMATION

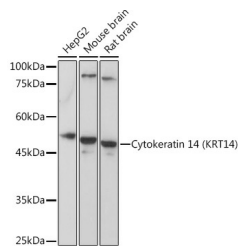
Product Type	Primary antibodies
Short Description	Rabbit polyclonal antibody anti-KRT14 (C-Term) is suitable for use in Western Blot, Immunohistochemistry and Immunofluorescence.
Applications	WB, IHC, IF
Host/Source	Rabbit
Reactivity	Human, Mouse, Rat

PRODUCT PROPERTIES

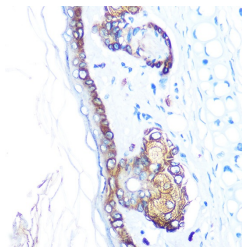
Clonality	Polyclonal
Clone ID	
Concentration	
Conjugation	Unconjugated
Purification	Affinity purification
Dilution Range	WB 1:500-1:2000 IHC 1:50-1:100 IF 1:50-1:100
Formulation	PBS containing 0.02% Sodium Azide, 50% Glycerol, pH7.3.
Isotype	IgG
Storage	Store in a freezer at -20°C and avoid freeze-thaw cycles.
Instruction	

TARGET INFORMATION

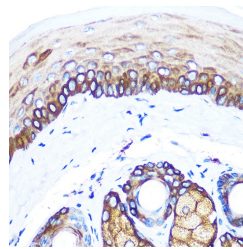
Gene ID	3861
Gene Symbol	KRT14
Uniprot ID	K1C14_HUMAN
Immunogen	A synthetic peptide corresponding to a sequence within amino acids 400 to the C-terminus of human Cytokeratin 14 (Cytokeratin 14 (KRT14)) (NP_000517.2).
Immunogen Region	C-Term
Specificity	
Immunogen Sequence	



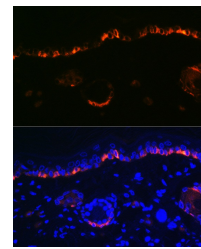
Western blot analysis of extracts of various cell lines, using Cytokeratin 14 (Cytokeratin 14 (KRT14)) rabbit polyclonal antibody (STJ117263) at 1:5000 dilution. Secondary antibody: HRP Goat Anti-rabbit IgG (H+L) at 1:10000 dilution. Lysates/proteins: 25µg per lane. Blocking buffer: 3% nonfat dry milk in TBST. Detection: ECL Basic Kit. Exposure time: 30s.



Immunohistochemistry of paraffin-embedded Rat skin using Cytokeratin 14 (Cytokeratin 14 (KRT14)) rabbit polyclonal antibody (STJ117263) at dilution of 1:100 (40x lens).



Immunohistochemistry of paraffin-embedded mouse skin using Cytokeratin 14 (Cytokeratin 14 (KRT14)) rabbit polyclonal antibody (STJ117263) at dilution of 1:100 (40x lens).



Immunofluorescence analysis of Rat skin cells using Cytokeratin 14 (Cytokeratin 14 (KRT14)) antibody (STJ117263) at dilution of 1:100. Blue: DAPI for nuclear staining.

This product is suitable for in-vitro studies under the RESEARCH USE ONLY [RUO] licence. This product must not be used as for diagnostic or other medical purposes.

St John's Laboratory Ltd, Knowledge Dock Business Centre, University Way, London, E16 2RD | Tel: 0208 223 3081