

Anti-SLC6A3 antibody (C-Term) (STJ117430)

STJ117430

GENERAL INFORMATION

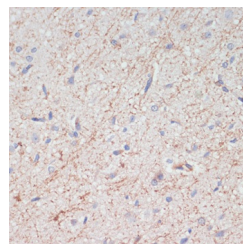
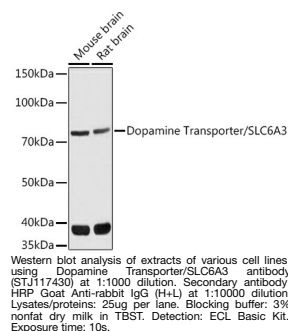
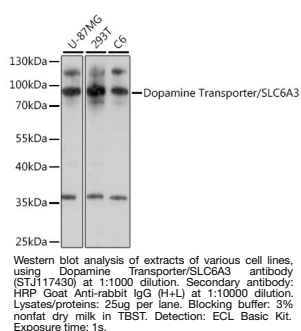
Product Type	Primary antibodies
Short Description	Rabbit polyclonal antibody anti-SLC6A3 (C-Term) is suitable for use in Western Blot, Immunohistochemistry and Immunofluorescence.
Applications	WB, IHC, IF
Host/Source	Rabbit
Reactivity	Human, Mouse, Rat

PRODUCT PROPERTIES

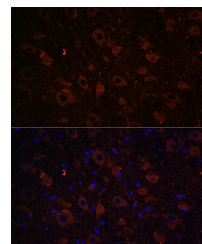
Clonality	Polyclonal
Clone ID	
Concentration	
Conjugation	Unconjugated
Purification	Affinity purification
Dilution Range	WB 1:500-1:2000 IHC 1:50-1:100 IF 1:50-1:200
Formulation	PBS containing 0.02% Sodium Azide, 50% Glycerol, pH7.3.
Isotype	IgG
Storage Instruction	Store in a freezer at -20°C and avoid freeze-thaw cycles.

TARGET INFORMATION

Gene ID	6531
Gene Symbol	SLC6A3
Uniprot ID	SC6A3_HUMAN
Immunogen	A synthetic peptide corresponding to a sequence within amino acids 500 to the C-terminus of human SLC6A3 (NP_001035.1).
Immunogen Region	C-Term
Specificity	
Immunogen Sequence	



Immunohistochemistry of paraffin-embedded rat brain using Dopamine Transporter/SLC6A3 antibody (STJ117430) at dilution of 1:200 (40x lens).



Immunofluorescence analysis of rat brain using Dopamine Transporter/SLC6A3 rabbit polyclonal antibody (STJ117430) at dilution of 1:100 (40x lens). Blue: DAPI for nuclear staining.

This product is suitable for in-vitro studies under the RESEARCH USE ONLY [RUO] licence. This product must not be used as for diagnostic or other medical purposes.
St John's Laboratory Ltd, Knowledge Dock Business Centre, University Way, London, E16 2RD | Tel: 0208 223 3081