

Anti-SUCLG1 antibody (41-346) (STJ117540)

STJ117540

GENERAL INFORMATION

Product Type	Primary antibodies
Short Description	Rabbit polyclonal antibody anti-SUCLG1 (41-346) is suitable for use in Western Blot and Immunofluorescence.
Applications	WB, IF
Host/Source	Rabbit
Reactivity	Human, Mouse, Rat

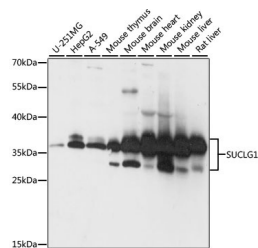
PRODUCT PROPERTIES

Clonality	Polyclonal
Clone ID	
Concentration	
Conjugation	Unconjugated
Purification	Affinity purification
Dilution Range	WB 1:200-1:2000 IF 1:50-1:200
Formulation	PBS containing 0.02% Sodium Azide, 50% Glycerol, pH7.3.
Isotype	IgG
Storage Instruction	Store in a freezer at -20°C and avoid freeze-thaw cycles.

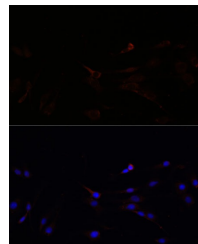
TARGET INFORMATION

Gene ID	8802
Gene Symbol	SUCLG1
Uniprot ID	SUCA_HUMAN
Immunogen	Recombinant fusion protein containing a sequence corresponding to amino acids 41-346 of human SUCLG1 (NP_003840.2).
Immunogen Region	41-346

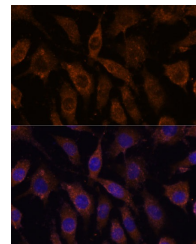
Specificity
Immunogen Sequence



Western blot analysis of extracts of various cell lines, using SUCLG1 antibody (STJ117540) at 1:1000 dilution. Secondary antibody: HRP Goat Anti-rabbit IgG (H+L) at 1:10000 dilution. Lysates/proteins: 25ug per lane. Blocking buffer: 3% nonfat dry milk in TBST. Detection: ECL Basic Kit. Exposure time: 5s.



Immunofluorescence analysis of C6 cells using SUCLG1 antibody (STJ117540) at dilution of 1:100. Blue: DAPI for nuclear staining.



Immunofluorescence analysis of L929 cells using SUCLG1 antibody (STJ117540) at dilution of 1:100. Blue: DAPI for nuclear staining.