

## Anti-P2RY12 antibody (C-Term) (STJ117783)

STJ117783

### GENERAL INFORMATION

|                          |   |
|--------------------------|---|
| <b>Product Type</b>      | Primary antibodies  |
| <b>Short Description</b> | Rabbit polyclonal antibody anti-P2RY12 (C-Term) is suitable for use in Western Blot and Immunofluorescence. |
| <b>Applications</b>      | WB, IF  |
| <b>Host/Source</b>       | Rabbit  |
| <b>Reactivity</b>        | Human, Mouse, Rat   |

### PRODUCT PROPERTIES

|                            |   |
|----------------------------|---|
| <b>Clonality</b>           | Polyclonal  |
| <b>Clone ID</b>            |   |
| <b>Concentration</b>       |   |
| <b>Conjugation</b>         | Unconjugated  |
| <b>Purification</b>        | Affinity purification                                     |
| <b>Dilution Range</b>      | WB 1:500-1:2000<br>IF 1:50-1:200                          |
| <b>Formulation</b>         | PBS containing 0.02% Sodium Azide, 50% Glycerol, pH7.3.   |
| <b>Isotype</b>             | IgG   |
| <b>Storage Instruction</b> | Store in a freezer at -20°C and avoid freeze-thaw cycles. |

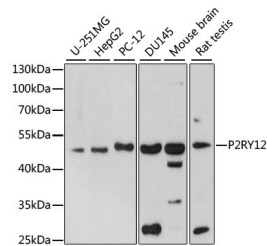
### TARGET INFORMATION

|                    |   |
|--------------------|---|
| <b>Gene ID</b>     | 64805   |
| <b>Gene Symbol</b> | P2RY12  |
| <b>Uniprot ID</b>  | P2Y12_HUMAN   |
| <b>Immunogen</b>   | A synthetic peptide corresponding to a sequence within amino acids 200 to the C-terminus of human P2RY12 (NP_795345.1). |

**Immunogen Region**  
C-Term

**Specificity**

**Immunogen Sequence**



Western blot analysis of extracts of various cell lines, using P2RY12 antibody (STJ117783) at 1:1000 dilution. Secondary antibody: HRP Goat Anti-rabbit IgG (H+L) at 1:10000 dilution. Lysates/proteins: 25µg per lane. Blocking buffer: 3% nonfat dry milk in TBST. Detection: ECL Basic Kit. Exposure time: 180s.

This product is suitable for in-vitro studies under the RESEARCH USE ONLY [RUO] licence. This product must not be used as for diagnostic or other medical purposes.  
St John's Laboratory Ltd, Knowledge Dock Business Centre, University Way, London, E16 2RD | Tel: 0208 223 3081