

Anti-MAP1LC3C antibody (1-147) (STJ117859)

STJ117859

GENERAL INFORMATION

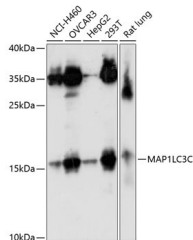
Product Type	Primary antibodies
Short Description	Rabbit polyclonal antibody anti-MAP1LC3C (1-147) is suitable for use in Western Blot, Immunohistochemistry and Immunofluorescence.
Applications	WB, IHC, IF
Host/Source	Rabbit
Reactivity	Human, Mouse, Rat

PRODUCT PROPERTIES

Clonality	Polyclonal
Clone ID	
Concentration	
Conjugation	Unconjugated
Purification	Affinity purification
Dilution Range	WB 1:500-1:2000 IHC 1:50-1:100 IF 1:50-1:100
Formulation	PBS containing 0.02% Sodium Azide, 50% Glycerol, pH7.3.
Isotype	IgG
Storage Instruction	Store in a freezer at -20°C and avoid freeze-thaw cycles.

TARGET INFORMATION

Gene ID	440738
Gene Symbol	MAP1LC3C
Uniprot ID	MLP3C_HUMAN
Immunogen	Recombinant fusion protein containing a sequence corresponding to amino acids 1-147 of human MAP1LC3C (NP_001004343.1).
Immunogen Region	1-147
Specificity	
Immunogen Sequence	



Western blot analysis of extracts of various cell lines, using MAP1LC3C antibody (STJ117859) at 1:1000 dilution. Secondary antibody: HRP Goat Anti-rabbit IgG (H+L) at 1:10000 dilution. Lysates/proteins: 25ug per lane. Blocking buffer: 3% nonfat dry milk in TBST. Detection: ECL Enhanced Kit. Exposure time: 90s.