

Anti-Kctd19 antibody (1-300) (STJ119418)

STJ119418

GENERAL INFORMATION

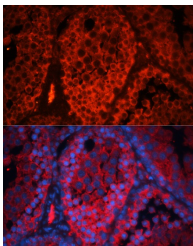
Product Type	Primary antibodies
Short Description	Rabbit polyclonal antibody anti-Kctd19 (1-300) is suitable for use in Immunofluorescence.
Applications	IF
Host/Source	Rabbit
Reactivity	Mouse, Rat

PRODUCT PROPERTIES

Clonality	Polyclonal
Clone ID	
Concentration	
Conjugation	Unconjugated
Purification	Affinity purification
Dilution Range	IF 1:50-1:200
Formulation	PBS containing 0.02% Sodium Azide, 50% Glycerol, pH7.3.
Isotype	IgG
Storage Instruction	Store in a freezer at -20°C and avoid freeze-thaw cycles.

TARGET INFORMATION

Gene ID	279499
Gene Symbol	Kctd19
Uniprot ID	KCD19_MOUSE
Immunogen	Recombinant fusion protein containing a sequence corresponding to amino acids 1-300 of mouse Kctd19 (NP_001288102.1).
Immunogen Region	1-300
Specificity	
Immunogen Sequence	



Immunofluorescence analysis of mouse testis using Kctd19 antibody (STJ119418) at dilution of 1:100. Blue: DAPI for nuclear staining.

This product is suitable for in-vitro studies under the RESEARCH USE ONLY [RUO] licence. This product must not be used as for diagnostic or other medical purposes.
St John's Laboratory Ltd, Knowledge Dock Business Centre, University Way, London, E16 2RD | Tel: 0208 223 3081