

Anti-Smoothelin antibody [R4A] (STJ16100219)

STJ16100219

GENERAL INFORMATION

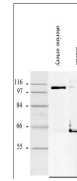
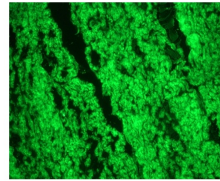
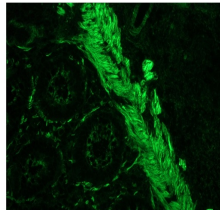
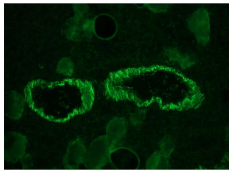
| | |
|--------------------------|--|
| Product Type | Primary antibodies |
| Short Description | Mouse monoclonal antibody anti-Smoothelin is suitable for use in Immunocytochemistry, Immunohistochemistry and Western Blot research applications. |
| Applications | ICC, IHC-F, IHC-P, WB |
| Host/Source | Mouse |
| Reactivity | Human, Canine, Chicken, Feline, Monkey, Swine |

PRODUCT PROPERTIES

| | |
|-----------------------|------------------------------|
| Clonality | Monoclonal |
| Clone ID | R4A |
| Concentration | |
| Conjugation | Unconjugated |
| Purification | |
| Dilution Range | |
| Formulation | PBS with 0.09% sodium azide |
| Isotype | IgG1 |
| Storage | Store at 2-8°C upon receipt. |
| Instruction | |

TARGET INFORMATION

| | |
|--------------------|------------|
| Gene ID | 6525 |
| Gene Symbol | SMTN |
| Uniprot ID | SMTN_HUMAN |
| Immunogen | |
| Immunogen | |
| Region | |
| Specificity | |
| Immunogen | |
| Sequence | |



This product is suitable for in-vitro studies under the RESEARCH USE ONLY [RUO] licence. This product must not be used as for diagnostic or other medical purposes.
 St John's Laboratory Ltd, Knowledge Dock Business Centre, University Way, London, E16 2RD | Tel: 0208 223 3081