

Anti-Insulin antibody [2D11-H5] (STJ16100670)

STJ16100670

GENERAL INFORMATION

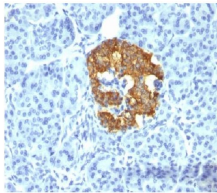
Product Type	Primary antibodies
Short Description	Mouse monoclonal antibody anti-Insulin is suitable for use in ELISA, Flow Cytometry, Immunohistochemistry and Immunofluorescence research applications.
Applications	ELISA, FC, IHC-F, IHC-P, IF
Host/Source	Mouse
Reactivity	Human, Mouse, Rabbit, Cow, Pig

PRODUCT PROPERTIES

Clonality	Monoclonal
Clone ID	2D11-H5
Concentration	
Conjugation	Unconjugated
Purification	
Dilution Range	
Formulation	PBS with 0.02% sodium azide
Isotype	IgG1
Storage	Store at 2-8°C upon receipt.
Instruction	

TARGET INFORMATION

Gene ID
Gene Symbol
Uniprot ID
Immunogen
Immunogen
Region
Specificity
Immunogen
Sequence



This product is suitable for in-vitro studies under the RESEARCH USE ONLY [RUO] licence. This product must not be used as for diagnostic or other medical purposes.
St John's Laboratory Ltd, Knowledge Dock Business Centre, University Way, London, E16 2RD | Tel: 0208 223 3081