

Anti-Phospho-ABL1-Y245 antibody (STJ22000)

STJ22000

GENERAL INFORMATION

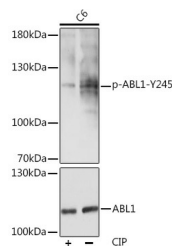
Product Type	Primary antibodies
Short Description	Rabbit polyclonal antibody anti-Phospho-ABL1-Y245 is suitable for use in Western Blot and Immunohistochemistry.
Applications	WB, IHC
Host/Source	Rabbit
Reactivity	Human, Mouse, Rat

PRODUCT PROPERTIES

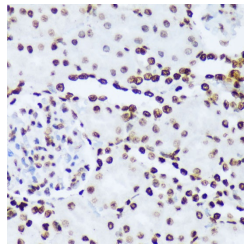
Clonality	Polyclonal
Clone ID	
Concentration	
Conjugation	Unconjugated
Purification	Affinity purification
Dilution Range	WB 1:500-1:2000 IHC 1:50-1:200
Formulation	PBS containing 0.02% Sodium Azide, 50% Glycerol, pH7.3.
Isotype	IgG
Storage Instruction	Store in a freezer at -20°C and avoid freeze-thaw cycles.

TARGET INFORMATION

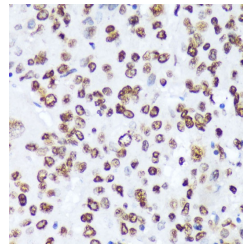
Gene ID	25
Gene Symbol	ABL1
Uniprot ID	ABL1_HUMAN
Immunogen	A phospho specific peptide corresponding to residues surrounding Y245 of human ABL1
Immunogen Region	
Specificity	
Immunogen Sequence	



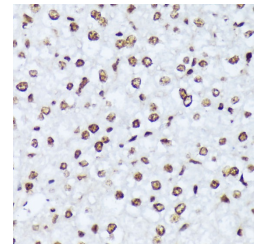
Western blot analysis of extracts of C6 cells, using Phospho-ABL1-Y245 polyclonal antibody (STJ22000) at 1:1000 dilution or ABL1 antibody (STJ22472). C6 cells were treated by CIP (20uL/400uL) at 37 °C for 1 hour. Secondary antibody: HRP Goat Anti-rabbit IgG (H+L) at 1:10000 dilution. Lysates/proteins: 25ug per lane. Blocking buffer: 3% BSA. Detection: ECL Basic Kit. Exposure time: 3S.



Immunohistochemistry of paraffin-embedded rat kidney using Phospho-ABL1-Y245 antibody (STJ22000) at dilution of 1:100 (40x lens).



Immunohistochemistry of paraffin-embedded human liver cancer using Phospho-ABL1-Y245 antibody (STJ22000) at dilution of 1:100 (40x lens).



Immunohistochemistry of paraffin-embedded mouse liver using Phospho-ABL1-Y245 antibody (STJ22000) at dilution of 1:100 (40x lens).

This product is suitable for in-vitro studies under the RESEARCH USE ONLY [RUO] licence. This product must not be used as for diagnostic or other medical purposes.
St John's Laboratory Ltd, Knowledge Dock Business Centre, University Way, London, E16 2RD | Tel: 0208 223 3081