

Anti-Phospho-MAPK6-S189 antibody (STJ22263)

STJ22263

GENERAL INFORMATION

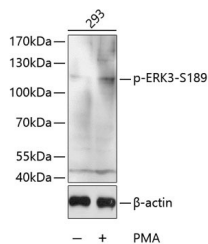
Product Type	Primary antibodies
Short Description	Rabbit polyclonal antibody anti-Phospho-ERK3-S189 is suitable for use in Western Blot.
Applications	WB
Host/Source	Rabbit
Reactivity	Human, Mouse, Rat

PRODUCT PROPERTIES

Clonality	Polyclonal
Clone ID	
Concentration	
Conjugation	Unconjugated
Purification	Affinity purification
Dilution Range	WB 1:500-1:2000
Formulation	PBS containing 0.02% Sodium Azide, 50% Glycerol, pH7.3.
Isotype	IgG
Storage Instruction	Store in a freezer at -20°C and avoid freeze-thaw cycles.

TARGET INFORMATION

Gene ID	5597
Gene Symbol	MAPK6
Uniprot ID	MK06_HUMAN
Immunogen	A synthetic phosphorylated peptide around S189 of human ERK3 (NP_002739.1).
Immunogen Region	
Specificity	
Immunogen Sequence	



Western blot analysis of extracts of 293 cells, using Phospho-ERK3-S189 antibody (STJ22263) at 1:1000 dilution. 293 cells were treated by PMA/TPA (200nM) for 30 minutes after serum-starvation overnight. Secondary antibody: HRP-Coat Anti-rabbit IgG (H+L) at 1:10000 dilution. Lysates/proteins: 25ug per lane. Blocking buffer: 3% BSA.

This product is suitable for in-vitro studies under the RESEARCH USE ONLY [RUO] licence. This product must not be used as for diagnostic or other medical purposes.
St John's Laboratory Ltd, Knowledge Dock Business Centre, University Way, London, E16 2RD | Tel: 0208 223 3081