

Anti-AKR1B1 antibody (1-316) (STJ22567)

STJ22567

GENERAL INFORMATION

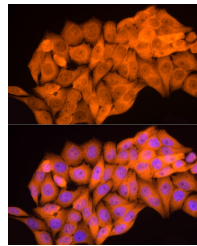
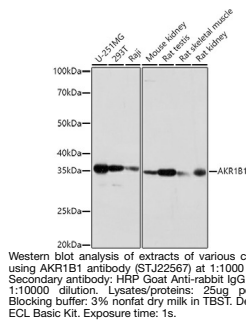
Product Type	Primary antibodies
Short Description	Rabbit polyclonal antibody anti-AKR1B1 (1-316) is suitable for use in Western Blot.
Applications	WB
Host/Source	Rabbit
Reactivity	Human, Mouse, Rat

PRODUCT PROPERTIES

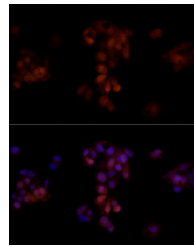
Clonality	Polyclonal
Clone ID	
Concentration	
Conjugation	Unconjugated
Purification	Affinity purification
Dilution Range	WB 1:500-1:2000
Formulation	PBS containing 0.02% Sodium Azide, 50% Glycerol, pH7.3.
Isotype	IgG
Storage Instruction	Store in a freezer at -20°C and avoid freeze-thaw cycles.

TARGET INFORMATION

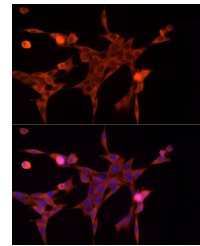
Gene ID	231
Gene Symbol	AKR1B1
Uniprot ID	ALDR_HUMAN
Immunogen	Recombinant fusion protein containing a sequence corresponding to amino acids 1-316 of human AKR1B1 (NP_001619.1).
Immunogen Region	1-316
Specificity	
Immunogen Sequence	



Immunofluorescence analysis of HeLa cells using AKR1B1 rabbit polyclonal antibody (STJ22567) at dilution of 1:50 (40x lens). Blue: DAPI for nuclear staining.



Immunofluorescence analysis of HepG2 cells using AKR1B1 rabbit polyclonal antibody (STJ22567) at dilution of 1:50 (40x lens). Blue: DAPI for nuclear staining.



Immunofluorescence analysis of NIH/3T3 cells using AKR1B1 rabbit polyclonal antibody (STJ22567) at dilution of 1:50 (40x lens). Blue: DAPI for nuclear staining.

This product is suitable for in-vitro studies under the RESEARCH USE ONLY [RUO] licence. This product must not be used as for diagnostic or other medical purposes.
 St John's Laboratory Ltd, Knowledge Dock Business Centre, University Way, London, E16 2RD | Tel: 0208 223 3081