

Anti-CC2D1A antibody (1-150) (STJ22924)

STJ22924

GENERAL INFORMATION

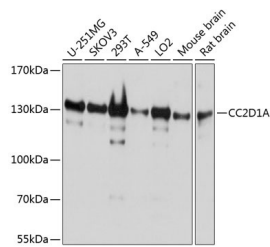
Product Type	Primary antibodies
Short Description	Rabbit polyclonal antibody anti-CC2D1A (1-150) is suitable for use in Western Blot and Immunohistochemistry.
Applications	WB, IHC
Host/Source	Rabbit
Reactivity	Human, Mouse, Rat

PRODUCT PROPERTIES

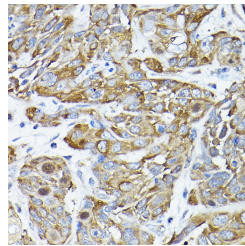
Clonality	Polyclonal
Clone ID	
Concentration	
Conjugation	Unconjugated
Purification	Affinity purification
Dilution Range	WB 1:1000-1:2000 IHC 1:50-1:200
Formulation	PBS containing 0.02% Sodium Azide, 50% Glycerol, pH7.3.
Isotype	IgG
Storage Instruction	Store in a freezer at -20°C and avoid freeze-thaw cycles.

TARGET INFORMATION

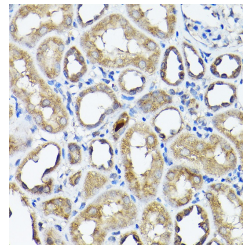
Gene ID	54862
Gene Symbol	CC2D1A
Uniprot ID	C2D1A_HUMAN
Immunogen	Recombinant fusion protein containing a sequence corresponding to amino acids 1-150 of human CC2D1A (NP_060191.3).
Immunogen Region	1-150
Specificity	
Immunogen Sequence	



Western blot analysis of extracts of various cell lines, using CC2D1A antibody (STJ22924) at 1:1000 dilution. Secondary antibody: HRP Goat Anti-rabbit IgG (H+L) at 1:10000 dilution. Lysates/proteins: 25ug per lane. Blocking buffer: 3% nonfat dry milk in TBST. Detection: ECL Basic Kit. Exposure time: 1s.



Immunohistochemistry of paraffin-embedded human esophageal cancer using CC2D1A rabbit polyclonal antibody (STJ22924) at dilution of 1:200 (40x lens).



Immunohistochemistry of paraffin-embedded rat kidney using CC2D1A rabbit polyclonal antibody (STJ22924) at dilution of 1:200 (40x lens).