

Anti-CD33 antibody (49-259) (STJ22989)

STJ22989

GENERAL INFORMATION

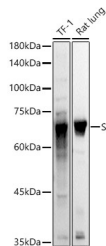
Product Type	Primary antibodies
Short Description	Rabbit polyclonal antibody anti-SIGLEC3/CD33 (49-259) is suitable for use in Western Blot, Immunohistochemistry and Immunofluorescence.
Applications	WB, IHC, IF
Host/Source	Rabbit
Reactivity	Human, Mouse, Rat

PRODUCT PROPERTIES

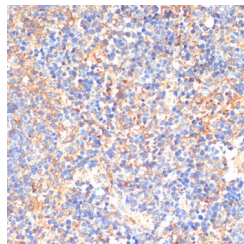
Clonality	Polyclonal
Clone ID	
Concentration	
Conjugation	Unconjugated
Purification	Affinity purification
Dilution Range	WB 1:500-1:2000 IHC 1:50-1:200 IF 1:50-1:200
Formulation	PBS containing 0.02% Sodium Azide, 50% Glycerol, pH7.3.
Isotype	IgG
Storage Instruction	Store in a freezer at -20°C and avoid freeze-thaw cycles.

TARGET INFORMATION

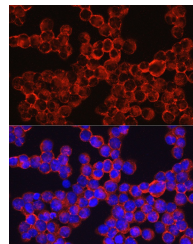
Gene ID	945
Gene Symbol	CD33
Uniprot ID	CD33_HUMAN
Immunogen	Recombinant fusion protein containing a sequence corresponding to amino acids 49-259 of human SIGLEC3/CD33 (NP_001763.3).
Immunogen Region	49-259
Specificity	
Immunogen Sequence	



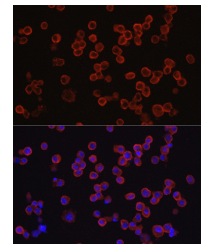
Western blot analysis of extracts of various cell lines, using SIGLEC3/CD33 antibody (STJ22989) at 1:1000 dilution. Secondary antibody: HRP Goat Anti-rabbit IgG (H+L) at 1:10000 dilution. Lysates/proteins: 25ug per lane. Blocking buffer: 3% nonfat dry milk in TBST. Detection: ECL Basic Kit. Exposure time: 3s.



Immunohistochemistry of paraffin-embedded mouse spleen using SIGLEC3/CD33 antibody (STJ22989) at dilution of 1:200 (40x lens). Perform microwave antigen retrieval with 10 mM PBS buffer pH 7, 2 before commencing with immunohistochemistry staining protocol.



Immunofluorescence analysis of K-562 cells using SIGLEC3/CD33 rabbit polyclonal antibody (STJ22989) at dilution of 1:150 (40x lens). Blue: DAPI for nuclear staining.



Immunofluorescence analysis of RAW264.7 cells using SIGLEC3/CD33 rabbit polyclonal antibody (STJ22989) at dilution of 1:150 (40x lens). Blue: DAPI for nuclear staining.