

Anti-CYLD antibody (654-953) (STJ23310)

STJ23310

GENERAL INFORMATION

Product Type	Primary antibodies
Short Description	Rabbit polyclonal antibody anti-CYLD (654-953) is suitable for use in Western Blot and Immunohistochemistry.
Applications	WB, IHC
Host/Source	Rabbit
Reactivity	Human, Mouse, Rat

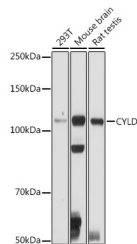
PRODUCT PROPERTIES

Clonality	Polyclonal
Clone ID	
Concentration	
Conjugation	Unconjugated
Purification	Affinity purification
Dilution Range	WB 1:200-1:2000 IHC 1:50-1:200
Formulation	PBS containing 0.02% Sodium Azide, 50% Glycerol, pH7.3.
Isotype	IgG
Storage Instruction	Store in a freezer at -20°C and avoid freeze-thaw cycles.

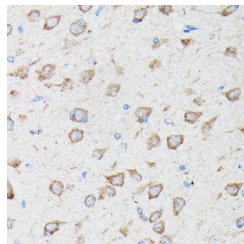
TARGET INFORMATION

Gene ID	1540
Gene Symbol	CYLD
Uniprot ID	CYLD_HUMAN
Immunogen	Recombinant fusion protein containing a sequence corresponding to amino acids 654-953 of human CYLD (NP_001035877.1).

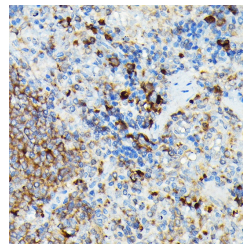
Immunogen Region
654-953
Specificity
Immunogen
Sequence



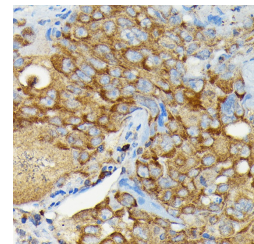
Western blot analysis of extracts of various cell lines, using CYLD antibody (STJ23310) at 1:500 dilution. Secondary antibody; HRP Goat Anti-rabbit IgG (H+L) at 1:10000 dilution. Lysates/proteins: 25ug per lane. Blocking buffer: 3% nonfat dry milk in TBST. Detection: ECL Basic Kit. Exposure time: 30s.



Immunohistochemistry of paraffin-embedded rat brain using CYLD rabbit polyclonal antibody (STJ23310) at dilution of 1:100 (40x lens).



Immunohistochemistry of paraffin-embedded rat spleen using CYLD rabbit polyclonal antibody (STJ23310) at dilution of 1:100 (40x lens).



Immunohistochemistry of paraffin-embedded human lung cancer using CYLD rabbit polyclonal antibody (STJ23310) at dilution of 1:100 (40x lens).

This product is suitable for in-vitro studies under the RESEARCH USE ONLY [RUO] licence. This product must not be used as for diagnostic or other medical purposes.
St John's Laboratory Ltd, Knowledge Dock Business Centre, University Way, London, E16 2RD | Tel: 0208 223 3081