

Anti-DNM1L antibody (411-710) (STJ23409)

STJ23409

GENERAL INFORMATION

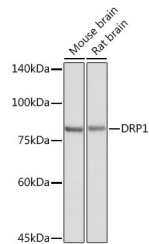
Product Type	Primary antibodies
Short Description	Rabbit polyclonal antibody anti-DRP1 (411-710) is suitable for use in Western Blot, Immunohistochemistry and Immunofluorescence.
Applications	WB, IHC, IF
Host/Source	Rabbit
Reactivity	Human, Mouse, Rat

PRODUCT PROPERTIES

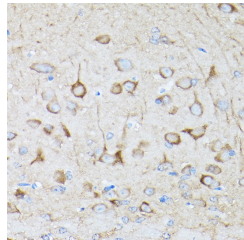
Clonality	Polyclonal
Clone ID	
Concentration	
Conjugation	Unconjugated
Purification	Affinity purification
Dilution Range	WB 1:500-1:2000 IHC 1:50-1:200 IF 1:50-1:200
Formulation	PBS containing 0.02% Sodium Azide, 50% Glycerol, pH7.3.
Isotype	IgG
Storage Instruction	Store in a freezer at -20°C and avoid freeze-thaw cycles.

TARGET INFORMATION

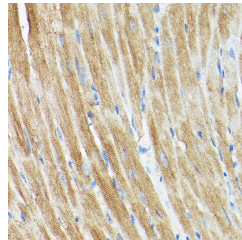
Gene ID	10059
Gene Symbol	DNM1L
Uniprot ID	DNM1L_HUMAN
Immunogen	Recombinant fusion protein containing a sequence corresponding to amino acids 411-710 of human DRP1 (NP_036193.2).
Immunogen Region	411-710
Specificity	
Immunogen Sequence	



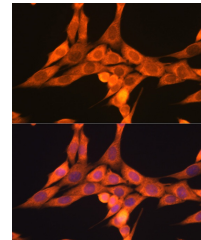
Western blot analysis of extracts of various cell lines, using DRP1 rabbit polyclonal antibody (STJ23409) at 1:8000 dilution. Secondary antibody: HRP Goat Anti-rabbit IgG (H+L) at 1:10000 dilution. Lysates/proteins: 25ug per lane. Blocking buffer: 3% nonfat dry milk in TBST. Detection: ECL Basic Kit. Exposure time: 1s.



Immunohistochemistry of paraffin-embedded rat brain using DRP1 rabbit polyclonal antibody (STJ23409) at dilution of 1:250 (40x lens). Perform high pressure antigen retrieval with 10 mM citrate buffer pH 6.0 before commencing with immunohistochemistry staining protocol.



Immunohistochemistry of paraffin-embedded rat heart using DRP1 rabbit polyclonal antibody (STJ23409) at dilution of 1:250 (40x lens). Perform high pressure antigen retrieval with 10 mM citrate buffer pH 6.0 before commencing with immunohistochemistry staining protocol.



Immunofluorescence analysis of NIH/3T3 cells using DRP1 rabbit polyclonal antibody (STJ23409) at dilution of 1:100 (40x lens). Blue: DAPI for nuclear staining.