

Anti-IL1A antibody (112-271) (STJ24173)

STJ24173

GENERAL INFORMATION

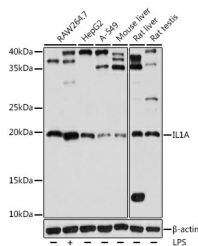
Product Type	Primary antibodies
Short Description	Rabbit polyclonal antibody anti-IL1A (112-271) is suitable for use in Western Blot.
Applications	WB
Host/Source	Rabbit
Reactivity	Human, Mouse, Rat

PRODUCT PROPERTIES

Clonality	Polyclonal
Clone ID	
Concentration	
Conjugation	Unconjugated
Purification	Affinity purification
Dilution Range	WB 1:500-1:2000
Formulation	PBS containing 0.02% Sodium Azide, 50% Glycerol, pH7.3.
Isotype	IgG
Storage Instruction	Store in a freezer at -20°C and avoid freeze-thaw cycles.

TARGET INFORMATION

Gene ID	3552
Gene Symbol	IL1A
Uniprot ID	IL1A_HUMAN
Immunogen	Recombinant fusion protein containing a sequence corresponding to amino acids 112-271 of human IL1A (NP_000566.3).
Immunogen Region	112-271
Specificity	
Immunogen Sequence	



Western blot analysis of extracts of various cell lines, using (STJ24173) at 1:1000 dilution. Raw264.7 cells were treated by LPS (1 μ g/ml) at 37 °C for 8 hours. Secondary antibody: HRP Goat Anti-rabbit IgG (H+L) at 1:10000 dilution. Lysates/proteins: 25 μ g per lane. Blocking buffer: 3% nonfat dry milk in TBST. Detection: ECL Basic Kit. Exposure time: 10s.

This product is suitable for in-vitro studies under the RESEARCH USE ONLY [RUO] licence. This product must not be used as for diagnostic or other medical purposes.
 St John's Laboratory Ltd, Knowledge Dock Business Centre, University Way, London, E16 2RD | Tel: 0208 223 3081