

Anti-KIR3DL1 antibody (22-222) (STJ24317)

STJ24317

GENERAL INFORMATION

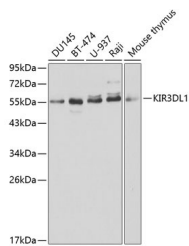
Product Type	Primary antibodies
Short Description	Rabbit polyclonal antibody anti-KIR3DL1 (22-222) is suitable for use in Western Blot.
Applications	WB
Host/Source	Rabbit
Reactivity	Human, Mouse

PRODUCT PROPERTIES

Clonality	Polyclonal
Clone ID	
Concentration	
Conjugation	Unconjugated
Purification	Affinity purification
Dilution Range	WB 1:500-1:2000
Formulation	PBS containing 0.02% Sodium Azide, 50% Glycerol, pH7.3.
Isotype	IgG
Storage Instruction	Store in a freezer at -20°C and avoid freeze-thaw cycles.

TARGET INFORMATION

Gene ID	3811
Gene Symbol	KIR3DL1
Uniprot ID	K13L1_HUMAN
Immunogen	Recombinant fusion protein containing a sequence corresponding to amino acids 22-222 of human KIR3DL1 (NP_037421.2).
Immunogen Region	22-222
Specificity	
Immunogen Sequence	



Western blot analysis of extracts of various cell lines, using KIR3DL1 antibody (STJ24317) at 1:1000 dilution. Secondary antibody: HRP Goat Anti-rabbit IgG (H+L) at 1:10000 dilution. Lysates/proteins: 25µg per lane. Blocking buffer: 3% nonfat dry milk in TBST.