

Anti-MS4A1 antibody (208-297) (STJ24609)

STJ24609

GENERAL INFORMATION

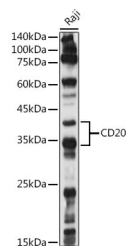
Product Type	Primary antibodies
Short Description	Rabbit polyclonal antibody anti-CD20 (208-297) is suitable for use in Western Blot, Immunohistochemistry and Immunofluorescence.
Applications	WB, IHC, IF
Host/Source	Rabbit
Reactivity	Human, Mouse

PRODUCT PROPERTIES

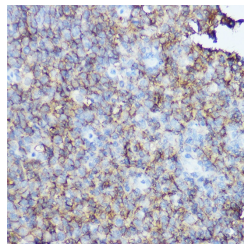
Clonality	Polyclonal
Clone ID	
Concentration	
Conjugation	Unconjugated
Purification	Affinity purification
Dilution Range	WB 1:500-1:2000 IF 1:50-1:200
Formulation	PBS containing 0.02% Sodium Azide, 50% Glycerol, pH7.3.
Isotype	IgG
Storage Instruction	Store in a freezer at -20°C and avoid freeze-thaw cycles.

TARGET INFORMATION

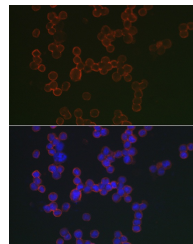
Gene ID	931
Gene Symbol	MS4A1
Uniprot ID	CD20_HUMAN
Immunogen	Recombinant fusion protein containing a sequence corresponding to amino acids 208-297 of human CD20 (NP_068769.2).
Immunogen Region	208-297
Specificity	
Immunogen Sequence	



Western blot analysis of extracts of Raji cells, using CD20 antibody (STJ24609) at 1:1000 dilution. Secondary antibody: HRP Goat Anti-rabbit IgG (H+L) at 1:10000 dilution. Lysates/proteins: 25ug per lane. Blocking buffer: 3% nonfat dry milk in TBST. Detection: ECL Basic Kit. Exposure time: 30s.



Immunohistochemistry of paraffin-embedded human tonsil using CD20 rabbit polyclonal antibody (STJ24609) at dilution of 1:150 (40x lens).



Immunofluorescence analysis of Raji cells using CD20 rabbit polyclonal antibody (STJ24609) at dilution of 1:150 (40x lens). Blue: DAPI for nuclear staining.

This product is suitable for in-vitro studies under the RESEARCH USE ONLY [RUO] licence. This product must not be used as for diagnostic or other medical purposes.
St John's Laboratory Ltd, Knowledge Dock Business Centre, University Way, London, E16 2RD | Tel: 0208 223 3081