

Anti-PRKAR2A antibody (1-404) (STJ25123)

STJ25123

GENERAL INFORMATION

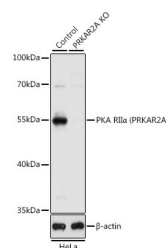
Product Type	Primary antibodies
Short Description	Rabbit polyclonal antibody anti-PRKAR2A (1-404) is suitable for use in Western Blot and Immunofluorescence.
Applications	WB, IF
Host/Source	Rabbit
Reactivity	Human, Mouse, Rat

PRODUCT PROPERTIES

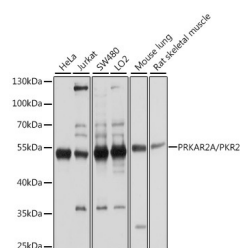
Clonality	Polyclonal
Clone ID	
Concentration	
Conjugation	Unconjugated
Purification	Affinity purification
Dilution Range	WB 1:1000-1:2000 IF 1:50-1:200
Formulation	PBS containing 0.02% Sodium Azide, 50% Glycerol, pH7.3.
Isotype	IgG
Storage	Store in a freezer at -20°C and avoid freeze-thaw cycles.
Instruction	

TARGET INFORMATION

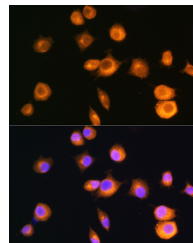
Gene ID	5576
Gene Symbol	PRKAR2A
Uniprot ID	KAP2_HUMAN
Immunogen	Recombinant fusion protein containing a sequence corresponding to amino acids 1-404 of human PKA RII Alpha (PRKAR2A) /PKR2 (NP_004148.1).
Immunogen Region	1-404
Specificity	
Immunogen Sequence	



Western blot analysis of extracts from normal (control) and PKA RII Alpha (PRKAR2A) /PKR2 knockout (KO) HeLa cells, using PKA RII Alpha (PRKAR2A) /PKR2 antibody (STJ25123) at 1:1000 dilution. Secondary antibody: HRP Goat Anti-rabbit IgG (H+L) at 1:10000 dilution. Lysates/proteins: 25ug per lane. Blocking buffer: 3% nonfat dry milk in TBST. Detection: ECL Basic Kit. Exposure time: 5s.



Western blot analysis of extracts of various cell lines, using PKA RII Alpha (PRKAR2A) /PKR2 antibody (STJ25123) at 1:1000 dilution. Secondary antibody: HRP Goat Anti-rabbit IgG (H+L) at 1:10000 dilution. Lysates/proteins: 25ug per lane. Blocking buffer: 3% nonfat dry milk in TBST. Detection: ECL Basic Kit. Exposure time: 5s.



Immunofluorescence analysis of L929 cells using [KO Validated] PKA RII Alpha (PRKAR2A) /PKR2 rabbit polyclonal antibody (STJ25123) at dilution of 1:100 (40x lens). Blue: DAPI for nuclear staining.

This product is suitable for in-vitro studies under the RESEARCH USE ONLY [RUO] licence. This product must not be used as for diagnostic or other medical purposes.
St John's Laboratory Ltd, Knowledge Dock Business Centre, University Way, London, E16 2RD | Tel: 0208 223 3081