

Anti-RUNX2 antibody (242-521) (STJ25424)

STJ25424

GENERAL INFORMATION

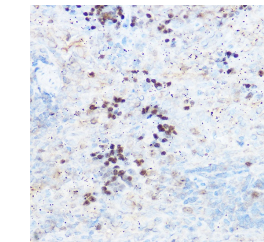
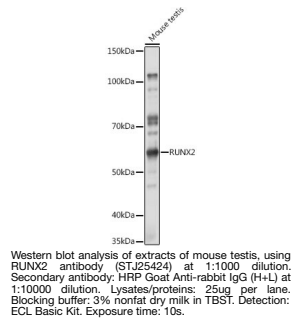
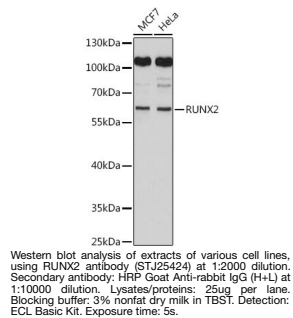
Product Type	Primary antibodies
Short Description	Rabbit polyclonal antibody anti-RUNX2 (242-521) is suitable for use in Western Blot, Immunohistochemistry and Immunofluorescence.
Applications	WB, IHC, IF
Host/Source	Rabbit
Reactivity	Human, Mouse, Rat

PRODUCT PROPERTIES

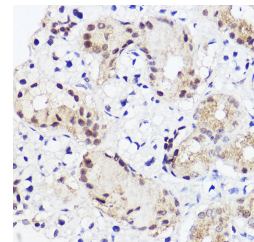
Clonality	Polyclonal
Clone ID	
Concentration	
Conjugation	Unconjugated
Purification	Affinity purification
Dilution Range	WB 1:200-1:1000 IHC 1:50-1:200 IF 1:50-1:200
Formulation	PBS containing 0.02% Sodium Azide, 50% Glycerol, pH7.3.
Isotype	IgG
Storage Instruction	Store in a freezer at -20°C and avoid freeze-thaw cycles.

TARGET INFORMATION

Gene ID	860
Gene Symbol	RUNX2
Uniprot ID	RUNX2_HUMAN
Immunogen	Recombinant fusion protein containing a sequence corresponding to amino acids 242-521 of human RUNX2 (NP_001019801.3).
Immunogen Region	242-521
Specificity	
Immunogen Sequence	



Immunohistochemistry of paraffin-embedded rat spleen using RUNX2 rabbit polyclonal antibody (STJ25424) at dilution of 1:300 (40x lens). Perform high pressure antigen retrieval with 10 mM citrate buffer pH 6.0 before commencing with immunohistochemistry staining protocol.



Immunohistochemistry of paraffin-embedded mouse salivary gland using RUNX2 rabbit polyclonal antibody (STJ25424) at dilution of 1:100 (40x lens). Perform high pressure antigen retrieval with 10 mM citrate buffer pH 6.0 before commencing with immunohistochemistry staining protocol.