

Anti-ENTPD2 antibody (28-268) (STJ28667)

STJ28667

GENERAL INFORMATION

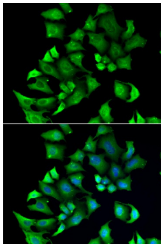
Product Type	Primary antibodies
Short Description	Rabbit polyclonal antibody anti-ENTPD2 (28-268) is suitable for use in Western Blot and Immunofluorescence.
Applications	WB, IF
Host/Source	Rabbit
Reactivity	Human

PRODUCT PROPERTIES

Clonality	Polyclonal
Clone ID	
Concentration	
Conjugation	Unconjugated
Purification	Affinity purification
Dilution Range	WB 1:500-1:2000 IF 1:50-1:100
Formulation	PBS containing 0.02% Sodium Azide, 50% Glycerol, pH7.3.
Isotype	IgG
Storage Instruction	Store in a freezer at -20°C and avoid freeze-thaw cycles.

TARGET INFORMATION

Gene ID	954
Gene Symbol	ENTPD2
Uniprot ID	ENTP2_HUMAN
Immunogen	Recombinant fusion protein containing a sequence corresponding to amino acids 28-268 of human ENTPD2 (NP_982293.1).
Immunogen Region	28-268
Specificity	
Immunogen Sequence	



Immunofluorescence analysis of A549 cells using ENTPD2 antibody (STJ28667). Blue: DAPI for nuclear staining.