

Anti-SLC35A2 antibody (1-242) (STJ29313)

STJ29313

GENERAL INFORMATION

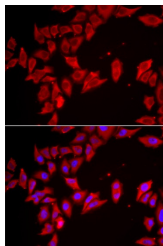
Product Type	Primary antibodies
Short Description	Rabbit polyclonal antibody anti-SLC35A2 (1-242) is suitable for use in Immunofluorescence.
Applications	IF
Host/Source	Rabbit
Reactivity	Human

PRODUCT PROPERTIES

Clonality	Polyclonal
Clone ID	
Concentration	
Conjugation	Unconjugated
Purification	Affinity purification
Dilution Range	IF 1:50-1:200
Formulation	PBS containing 0.02% Sodium Azide, 50% Glycerol, pH7.3.
Isotype	IgG
Storage Instruction	Store in a freezer at -20°C and avoid freeze-thaw cycles.

TARGET INFORMATION

Gene ID	7355
Gene Symbol	SLC35A2
Uniprot ID	S35A2_HUMAN
Immunogen	Recombinant fusion protein containing a sequence corresponding to amino acids 1-242 of human SLC35A2 (NP_001027460.1).
Immunogen Region	1-242
Specificity	
Immunogen Sequence	



Immunofluorescence analysis of HeLa cells using SLC35A2 antibody (STJ29313). Blue: DAPI for nuclear staining.

This product is suitable for in-vitro studies under the RESEARCH USE ONLY [RUO] licence. This product must not be used as for diagnostic or other medical purposes.
St John's Laboratory Ltd, Knowledge Dock Business Centre, University Way, London, E16 2RD | Tel: 0208 223 3081