

Anti-FANCM antibody (390-660) (STJ29739)

STJ29739

GENERAL INFORMATION

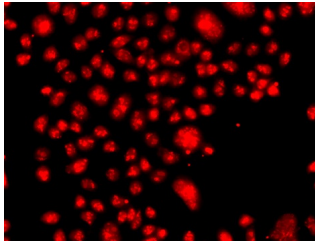
Product Type	Primary antibodies
Short Description	Rabbit polyclonal antibody anti-FANCM (390-660) is suitable for use in Western Blot and Immunofluorescence.
Applications	WB, IF
Host/Source	Rabbit
Reactivity	Human

PRODUCT PROPERTIES

Clonality	Polyclonal
Clone ID	
Concentration	
Conjugation	Unconjugated
Purification	Affinity purification
Dilution Range	WB 1:500-1:2000 IF 1:50-1:100
Formulation	PBS containing 0.02% Sodium Azide, 50% Glycerol, pH7.3.
Isotype	IgG
Storage Instruction	Store in a freezer at -20°C and avoid freeze-thaw cycles.

TARGET INFORMATION

Gene ID	57697
Gene Symbol	FANCM
Uniprot ID	FANCM_HUMAN
Immunogen	Recombinant fusion protein containing a sequence corresponding to amino acids 390-660 of human FANCM (NP_065988.1).
Immunogen Region	390-660
Specificity	
Immunogen Sequence	



Immunofluorescence analysis of A549 cells using FANCM antibody (STJ29739).

This product is suitable for in-vitro studies under the RESEARCH USE ONLY [RUO] licence. This product must not be used as for diagnostic or other medical purposes.
St John's Laboratory Ltd, Knowledge Dock Business Centre, University Way, London, E16 2RD | Tel: 0208 223 3081