

Anti-GRIN1 antibody (600-700) (STJ29990)

STJ29990

GENERAL INFORMATION

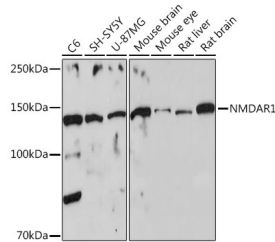
Product Type	Primary antibodies
Short Description	Rabbit polyclonal antibody anti-GRIN1 (600-700) is suitable for use in Western Blot, Immunohistochemistry and Immunofluorescence.
Applications	WB, IHC, IF
Host/Source	Rabbit
Reactivity	Human, Mouse, Rat

PRODUCT PROPERTIES

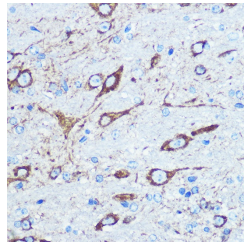
Clonality	Polyclonal
Clone ID	
Concentration	
Conjugation	Unconjugated
Purification	Affinity purification
Dilution Range	WB 1:500-1:2000 IHC 1:50-1:200 IF 1:50-1:200
Formulation	PBS containing 0.02% Sodium Azide, 50% Glycerol, pH7.3.
Isotype	IgG
Storage Instruction	Store in a freezer at -20°C and avoid freeze-thaw cycles.

TARGET INFORMATION

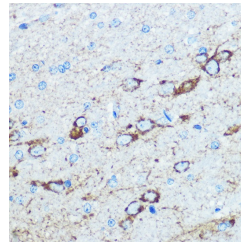
Gene ID	2902
Gene Symbol	GRIN1
Uniprot ID	NMDZ1_HUMAN
Immunogen	A synthetic peptide corresponding to a sequence within amino acids 600-700 of human NMDAR1 (NP_015566.1).
Immunogen Region	600-700
Specificity	
Immunogen Sequence	



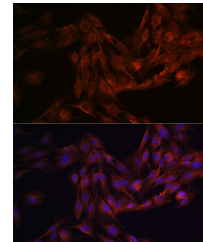
Western blot analysis of extracts of various cell lines, using NMDAR1 rabbit polyclonal antibody (STJ29990) at 1:500 dilution. Secondary antibody: HRP Goat Anti-rabbit IgG (H+L) at 1:10000 dilution. Lysates/proteins: 25ug per lane. Blocking buffer: 3% nonfat dry milk in TBST. Detection: ECL Basic Kit. Exposure time: 10s.



Immunohistochemistry of paraffin-embedded mouse brain using NMDAR1 rabbit polyclonal antibody (STJ29990) at dilution of 100 (40x lens).



Immunohistochemistry of paraffin-embedded rat brain using NMDAR1 rabbit polyclonal antibody (STJ29990) at dilution of 100 (40x lens).



Immunofluorescence analysis of C6 cells using NMDAR1 rabbit polyclonal antibody (STJ29990) at dilution of 1:100 (40x lens). Blue: DAPI for nuclear staining.

This product is suitable for in-vitro studies under the RESEARCH USE ONLY [RUO] licence. This product must not be used as for diagnostic or other medical purposes.

St John's Laboratory Ltd, Knowledge Dock Business Centre, University Way, London, E16 2RD | Tel: 0208 223 3081